

About Ikoma City

- Population: Approx. 120,742 (as of April 1, 2017)
- Area: Approx. 53km²
- Ikoma is a residential city, whose charm lies in its rich natural surroundings, as typified by the Mt. Ikoma Range



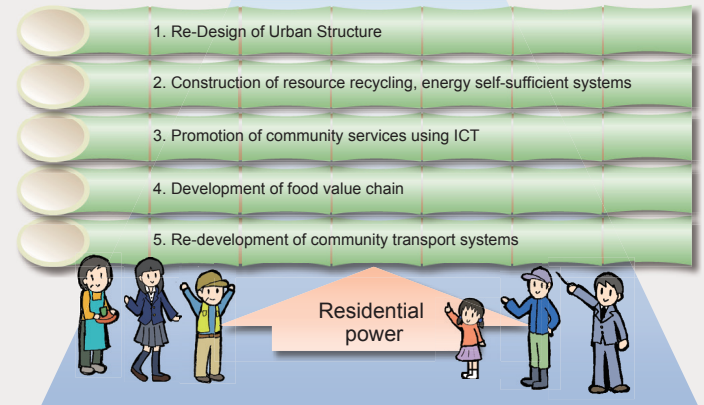
Traditional handcraft, Takayama Chasen bamboo tea whisk



Mt. Ikoma

Five pillars of initiatives

Future Vision for Ikoma
Low-carbon, recycling residential city, built through collaboration between residents, business, and government



Establishment of the New Power and Regional Energy Company

The regional corporation founded by Ikoma city, citizen group and regional companies buys electric power from Ikoma and surrounding areas and sells to citizens and regional companies to promote local power consumption.

In addition, we are planning to consider how to use profits from the electricity business at workshops, etc. participated by citizens and provide community service such as monitoring/shopping support for elderly people, child-raising/education support for young people, information provision using ICT.

