

## About Shimokawa Town

- Population: Approx. 3,400
- Area: 644.2 km<sup>2</sup>
- Land use: 91% forest, 5.5% agricultural land
- Main industries: Forestry, forest industry, agriculture

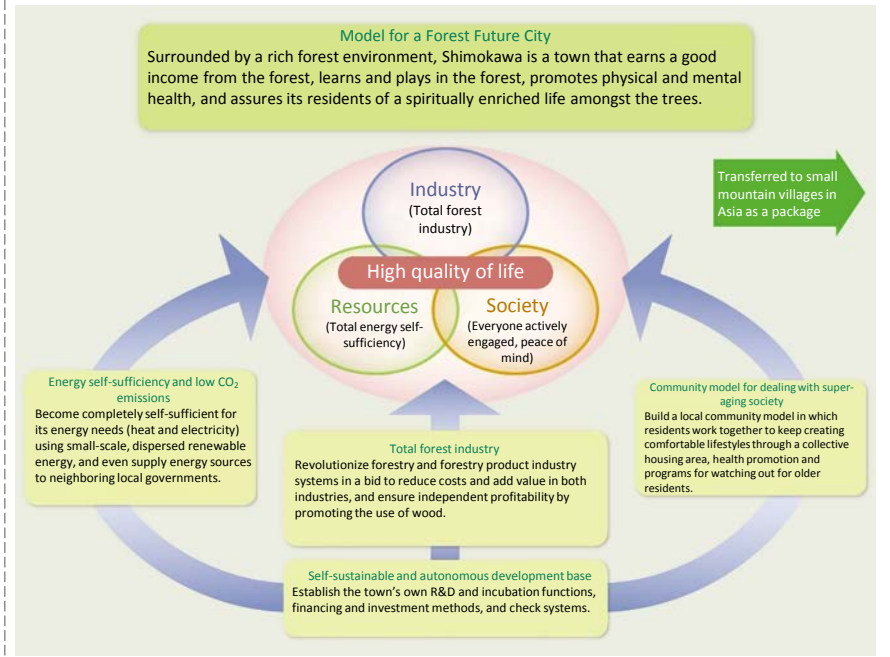
↓ Ski jumping legend, Noriaki Kasai



↓ Cosmetics made with essential oils made in Shimokawa



## Model for a Forest Future City



## Shimokawa Town Special Forest Products Cultivation Research Laboratory

- Background** Ichinohashi, a small village 12 km from Shimokawa Town, had a population of around 2,000 in 1960, but is now a marginal village with only about 130, mostly elderly, residents. That village of Ichinohashi is now the site of an energy self-sufficiency initiative mainly using wood biomass, a resource of the area.
- Objectives** To make use of wood biomass to cultivate special forest products, encourage local industries, and revitalize the local economy.
- Operations**
  - (1) Research and development into technologies for the cultivation and processing of special forest products
  - (2) Sales, distribution research, and opening of markets for special forest products

