

## About Sakai City

- Population: Approx. 840,000
  - Area: 149.82 km<sup>2</sup>
- (Major attractions, etc.)

Nintoku-tenno-ryo Kofun, one of the world's largest ancient burial mounds.



Sakai Risho no Mori, a museum



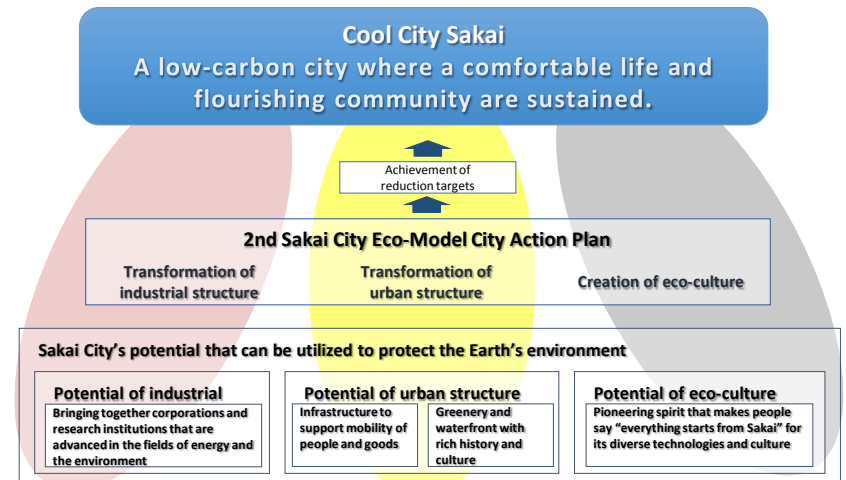
introducing Sen no Rikyu and Yosano Akiko.

Sakai Knives, prized by professional chefs for their outstanding sharpness.



## Eco-Model City Action Plan

Pursue initiatives from three perspectives, to realize "Cool City Sakai," a city of continued sustainable growth.



## Harumidai Eco-Model Town Project

Making effective use of public property, namely the site of a former elementary school, an eco-model town has been developed with excellent environmental features, such as net-zero energy houses (ZEH). (Sales commenced in 2013.)

### ■ Towards Low-Carbon Community Building

- Installation of equipment capable of achieving ZEH rate of 100%

All houses are equipped with a solar power generation system, lithium-ion battery system, high-efficiency water heater or domestic-use fuel cell, HEMS, LED lighting, and an exterior power outlet for an electric vehicle.

- All houses awarded S Rank in CASBEE Sakai assessment.



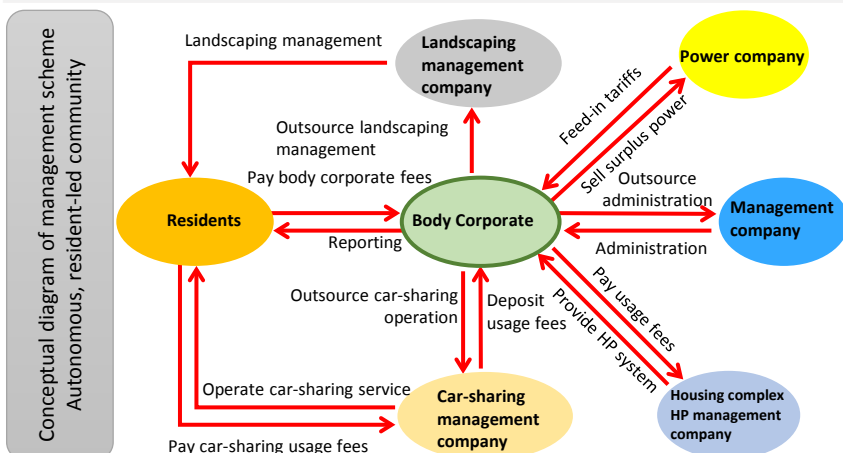
### ■ Disaster-resistant community

- Establishment of housing complex body corporate

Autonomous management of the community (housing complex) led by the residents themselves will sustain a favorable living environment and raise the value of the community.

- Disaster-preparedness functions of community hall

The community hall is equipped with a solar power generation system, large storage battery system, V2H system, and other facilities. Domestic water is ensured with a large rainwater storage tank, and emergency food supplies are stored in the hall. Benches that can be converted to use as cooking stoves or toilets have also been installed.



EV car sharing at community hall



Solar power equipment (17.1 kW) over regulating reservoir (common area)

## Contact

Environmental Policy Division, Environmental City Promotion Department, Environment Bureau, Sakai City (Attn: Ida/Sumihara)  
Tel: 072-228-3982 Fax: 072-228-7063 E-mail: kansei@city.sakai.lg.jp