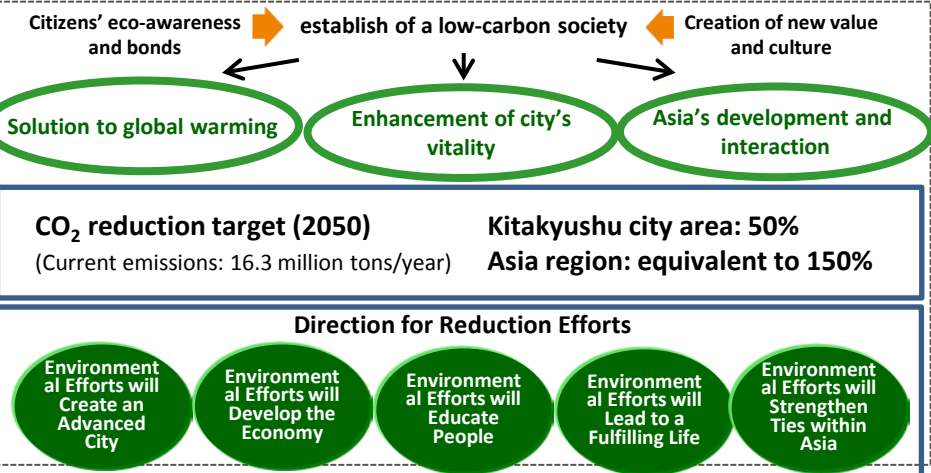


## Overview of the city

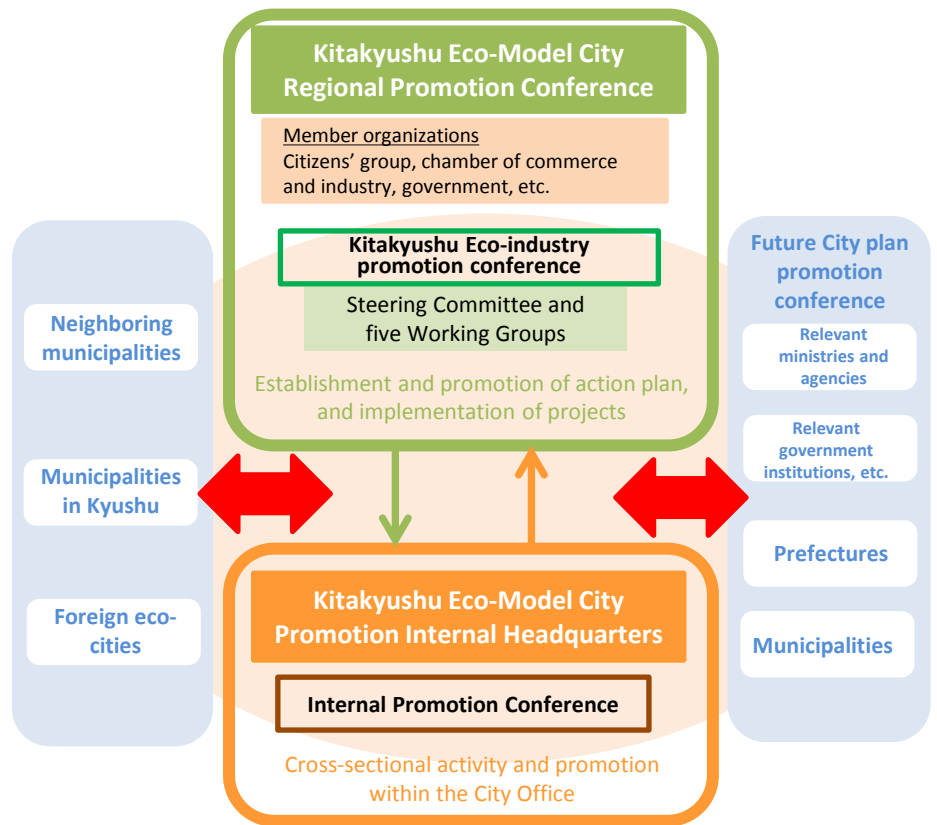
- Population: 959,000 (as of Aug. 1, 2015)
- Area: 491.95 km<sup>2</sup> (as of Oct. 1, 2014)
- Land use: forest (42.7%), residential land (14.0%), industrial land (7.0%), agricultural land (6.0%), commercial land (3.2%) (as of March, 2011)
- Main industries: Manufacturing industry, core manufacturing industry, automotive industry, electric components and devices industry, environment and energy industry, etc.

## Vision



## Roles of government, citizens, corporations and other organizations

### Promotion system



## Overview of characteristic efforts

### Kitakyushu Regional Energy Base Project

#### Forming an Energy Base for Stable and Cost-efficient Energy Supply through Low-Carbon Strategies

- Creates a city in which the lives of local residents are stable and businesses can conduct activities and achieve targets
- Forms a city that location of choice for many companies
- Builds a city that contributes to the success of both Kitakyushu and the broader region of Kyushu

Kitakyushu aspires to be a base that supports regional growth and discovers solutions to environmental/energy problems.



### Kitakyushu Asian Center for Low Carbon Society

The collective environmental technologies of the City of Kitakyushu and Japan are used to promote a "Low-Carbon Asia"

Asian Center for Low Carbon Society    Established in June 2010

The Center is jointly operated by the city of Kitakyushu, the Environmental Cooperation Center of the Kitakyushu International Techno-cooperative Association (KITA), and the Kitakyushu Urban Center of the Institute for Global Environmental Strategies (IGES). It aims to reduce CO<sub>2</sub> emissions by 150% throughout Asia by 2050 (compared to 2005 levels in Kitakyushu).



## Contact

Attn: Oda and Tsutsumi, Global Warming Response Division, Environment Bureau, City of Kitakyushu  
Tel.: 093-582-2286    Fax: 093-582-2196    E-mail: kan-ondanka@city.kitakyushu.lg.jp