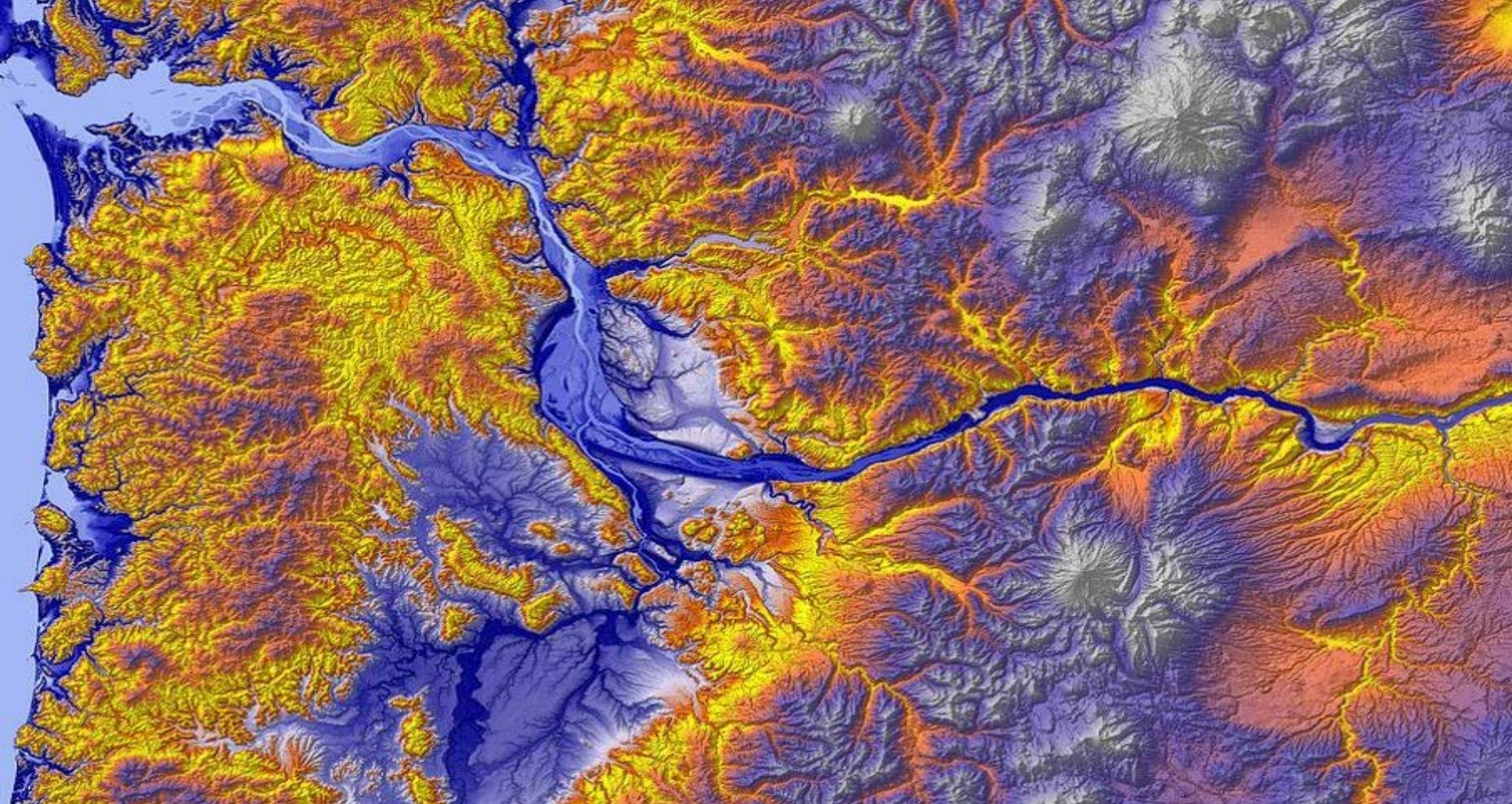
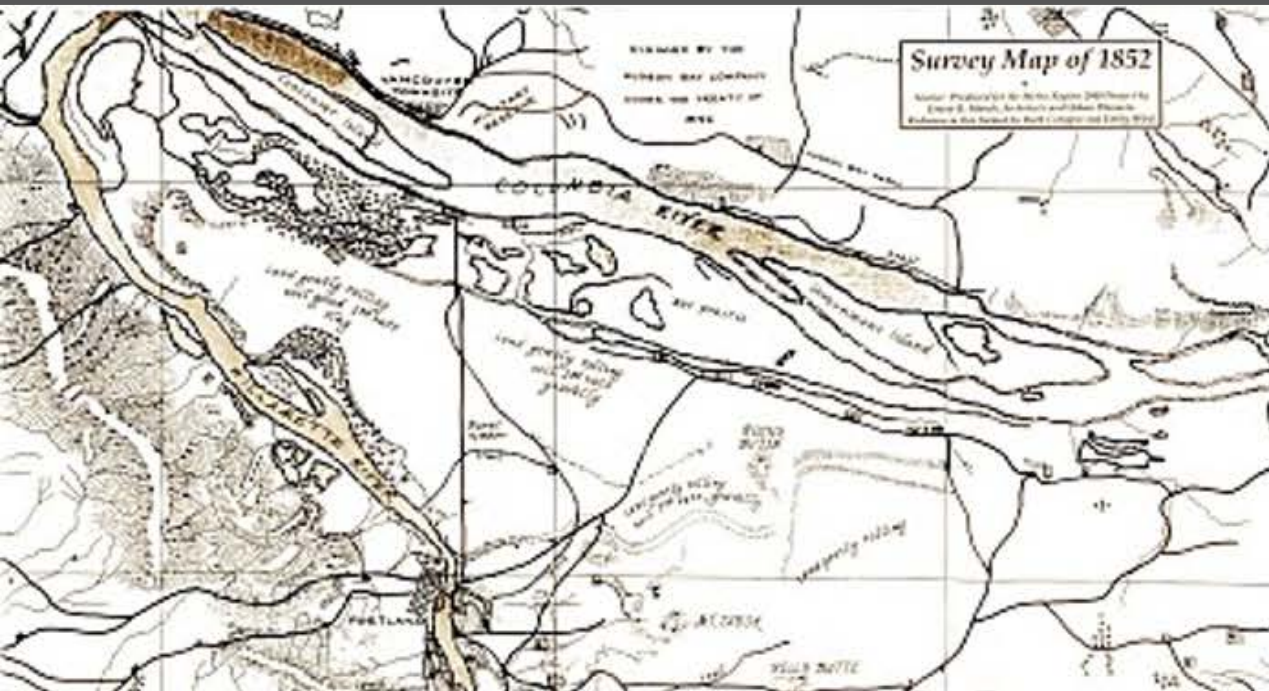




PORTLAND OREGON

WE BUILD
GREENCITIES





Portland story begins at a clearing by the river...heading to the sea.



The Squats's Last Stand



Copyright 2004. All rights reserved. This content may not be reproduced without the express written permission of the copyright owner.

Steady growth based on the harvest on nature's bounty.



Copyright 1911
by H. H. Hale.

Steady growth based on the harvest on nature's bounty.



Electric power generated by hydropower



SANBORN, VAIL & CO.

168

HA

172

SANDEN'S
ELECTRIC
BELTS
&
TRUSSES.

THE
FINEST
HARDY
WOOD
CUTTING





THE HYDE PARK, PORTLAND, JUNE 18, 1906.

\$10 STARTS YOU ON ROAD TO PROSPERITY IN HYDE PARK

NO INTEREST TO PAY
TAXES

HYDE PARK

Prosperity follows the Street Car Line

Whether you buy Real Estate for investment or to build a home, the popular location is **HYDE PARK**

FIVE BUILDING LOTS FREE

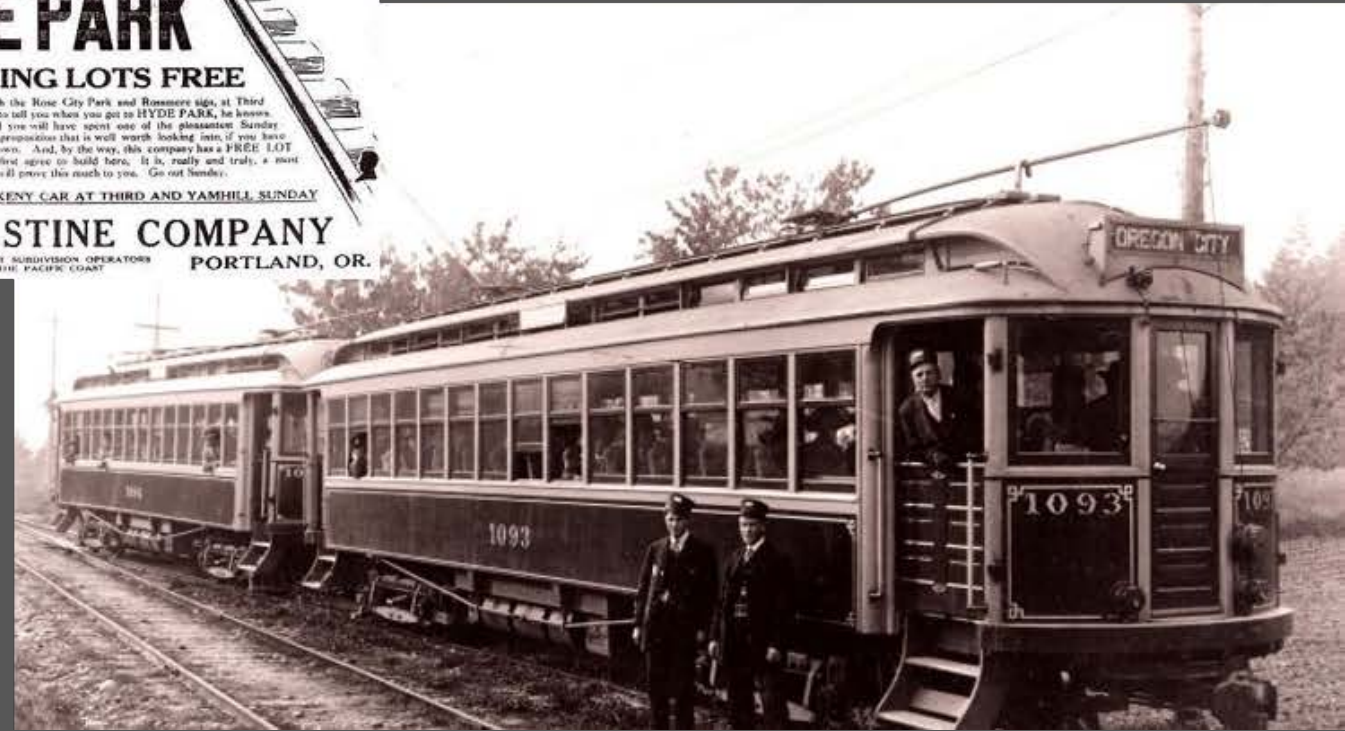
Board an East Ankeny car Sunday, with the Rose City Park and Rosemere signs, at Third and Yamhill streets. Ask the conductor to tell you when you get to HYDE PARK, he knows. Stroll around through the natural park and you will have spent one of the pleasantest Sunday afternoons in your life. HYDE PARK is a proposition that is well worth looking into, if you have any intention of ever building a home of your own. And, by the way, this company has a FREE LOT OFFER to the fortunate few people who will first agree to build here. It is, really and truly, a most delightful place to live. A visit will prove this much to you. Go out Sunday.

REMEMBER TO TAKE THE EAST ANKENY CAR AT THIRD AND YAMHILL SUNDAY

THE JACOBS-STINE COMPANY
148 FIFTH STREET THE LARGEST SUBDIVISION OPERATORS ON THE PACIFIC COAST PORTLAND, OR.

Fill Out and Mail This Coupon
THE JACOBS-STINE COMPANY
148 Fifth Street
Portland, Oregon
Name _____
Address _____

Fill Out and Mail This One Too
THE JACOBS-STINE COMPANY
148 Fifth Street
Portland, Oregon
Name _____
Address _____



Electric power generated by hydropower



An urban region shaped by electric mobility



Cue the shift to fossil fuel transportation

"Hello There" From Portland



Post-war planning and flight to the suburbs







Demise of the Mt. Hood Freeway – the birth of democratic transportation



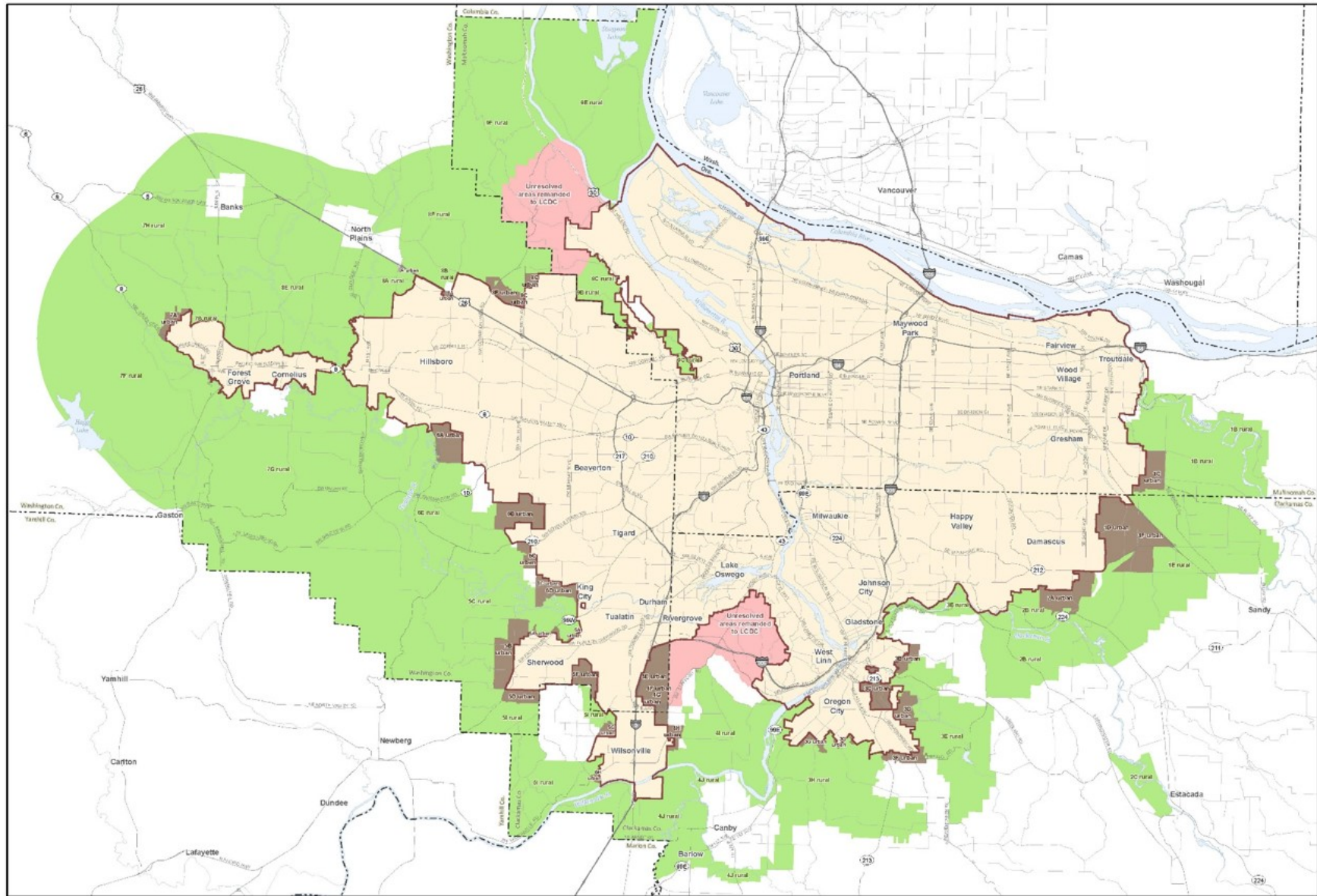
PORTLAND 1970s: 180 DAYS OF AIR QUALITY VIOLATIONS

1969: TriMet

1972: Portland Plan

1973: Senate Bill 100


1978: METRO



Urban and Rural Reserve Areas

June 2014

The information on this map is provided for informational purposes only. It is not intended to be used as a legal document. For more information, please contact Metro at 503.251.4700 or visit our website at metro.org. Metro is an Equal Opportunity Employer. Metro is an Equal Opportunity Employer. Metro is an Equal Opportunity Employer.

 Rural Reserve	 County Boundaries
 Urban Reserve	 Urban growth boundary
 Unresolved areas remanded to LCDC	



30-year mass transit plan

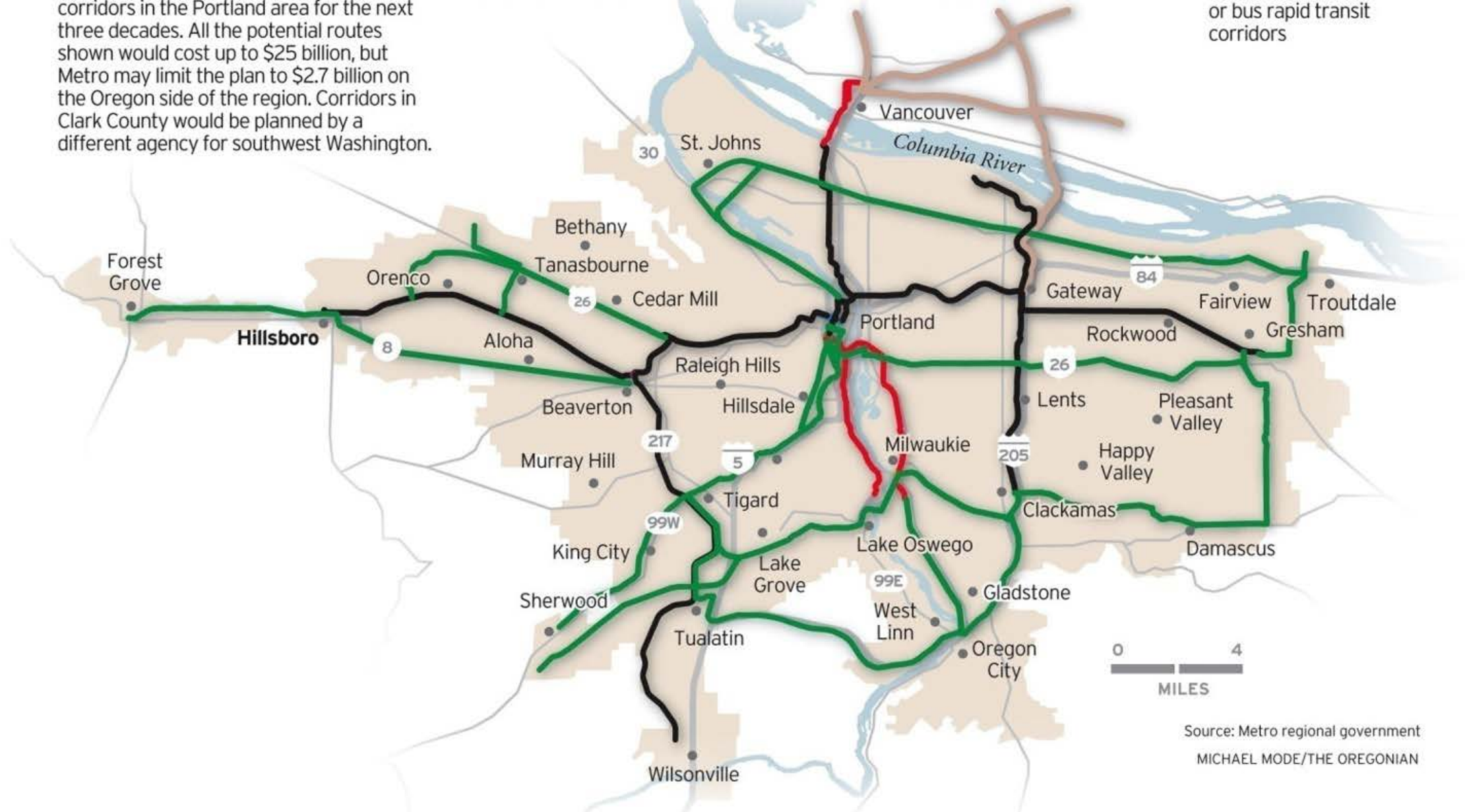
Metro is planning high-capacity mass-transit corridors in the Portland area for the next three decades. All the potential routes shown would cost up to \$25 billion, but Metro may limit the plan to \$2.7 billion on the Oregon side of the region. Corridors in Clark County would be planned by a different agency for southwest Washington.

Existing MAX
and commuter rail
under construction

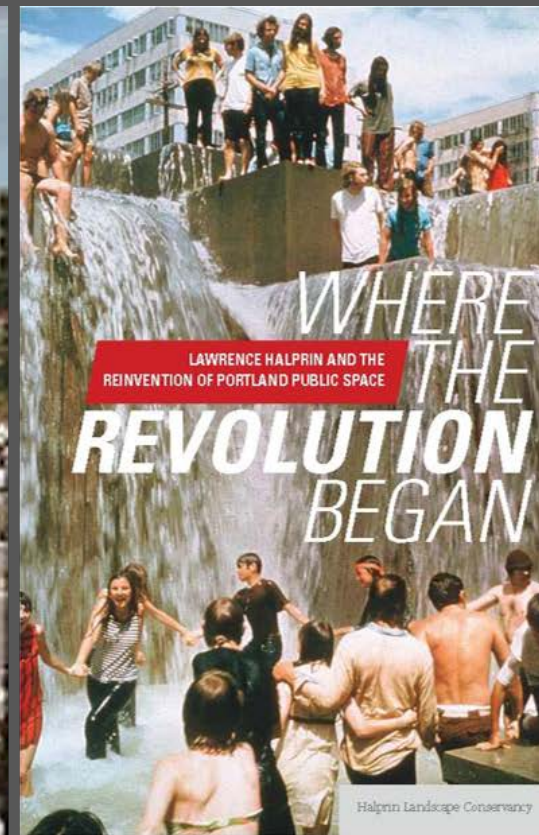
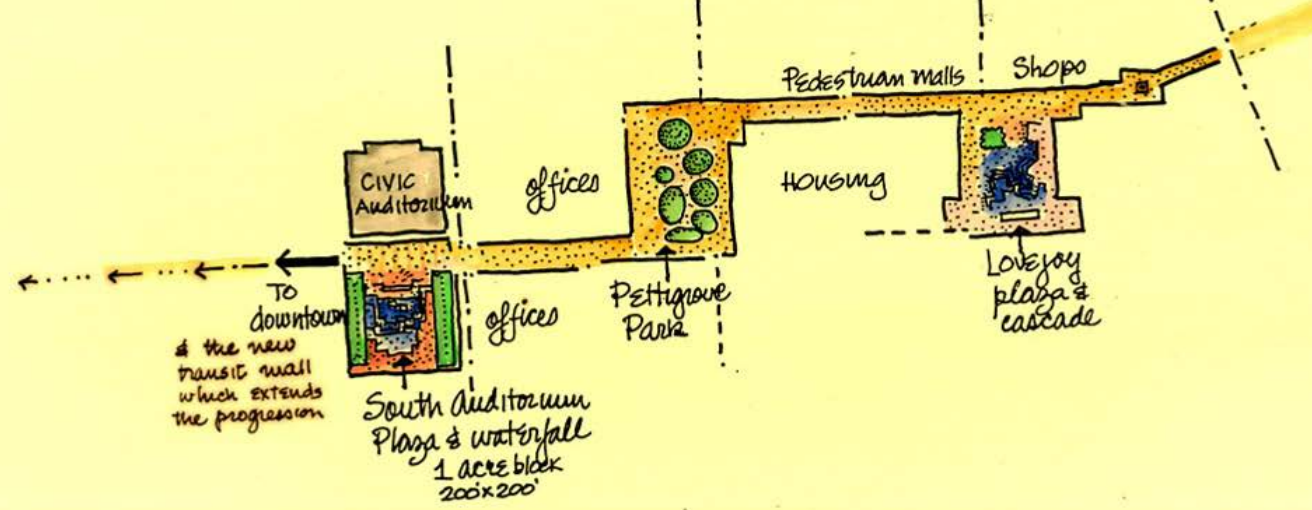
Planned MAX
and streetcar lines

Potential mass transit
corridors serving Clark
County

Potential MAX
or commuter rail or
high-speed streetcar
or bus rapid transit
corridors



Source: Metro regional government
MICHAEL MODE/THE OREGONIAN



Renewal of activism...civic places...livable communities





Renewal of activism...civic places...livable communities



Renewal of activism...civic places...livable communities



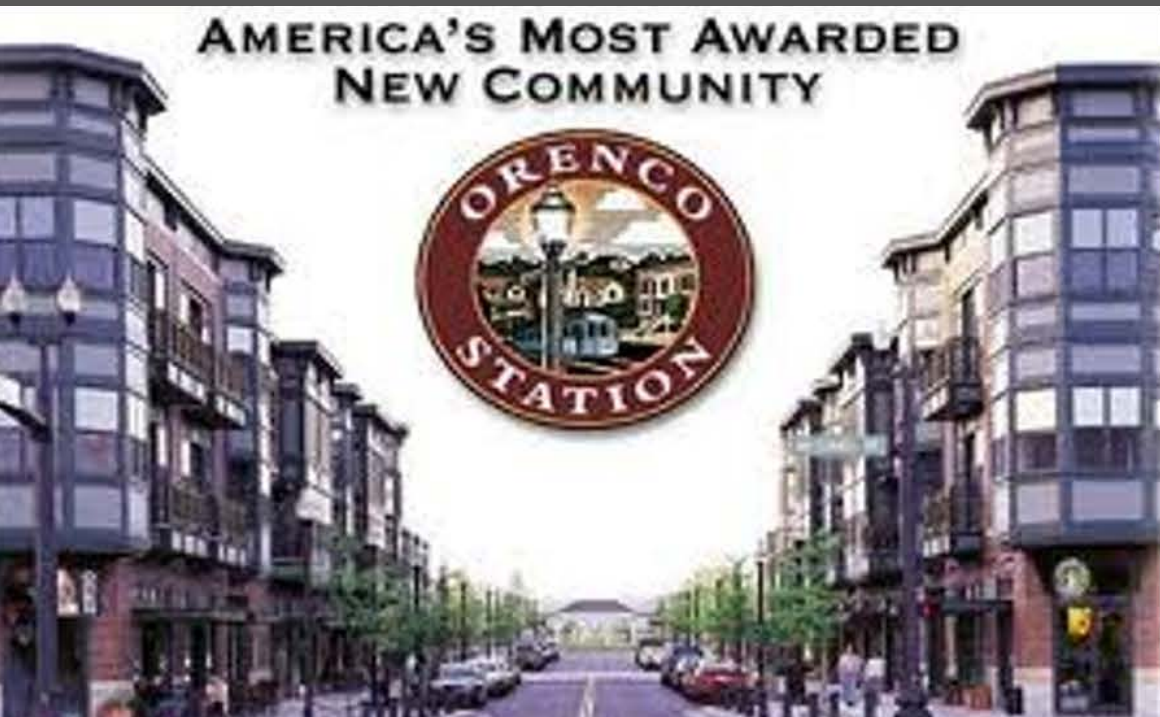
Renewal of activism...civic places...livable communities



1986: Portland to Gresham – The first light rail – Introduction of new public process







**AMERICA'S MOST AWARDED
NEW COMMUNITY**

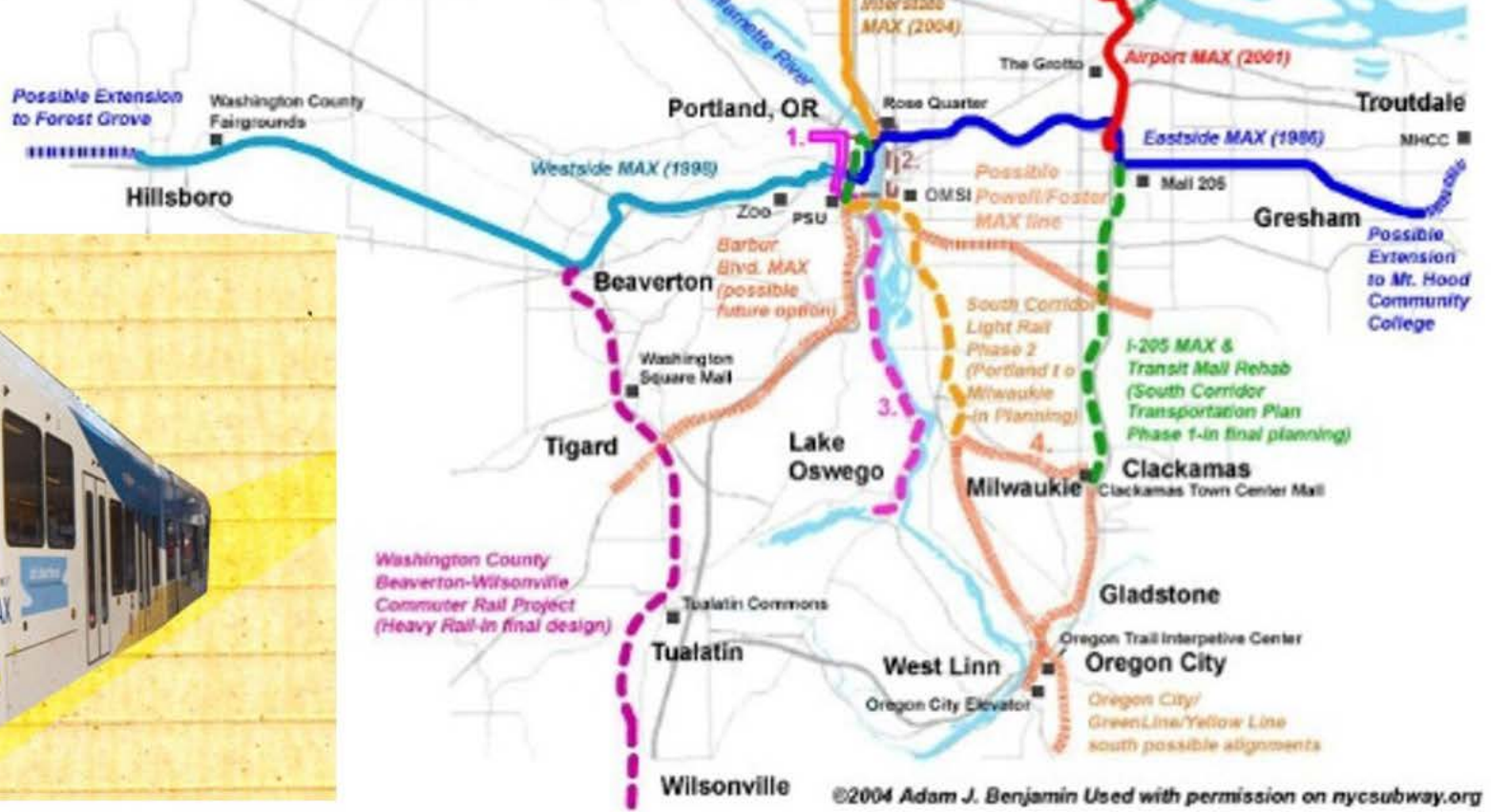


1998 Portland to Hillsboro Westside Light Rail Project



Portland, Oregon Metro Area Rail Transportation Expansion Past-Present-Future

-  Existing rail system & Extensions (solid lines-Year opened in parenthesis)
 -  Extensions in active planning (dotted lines, status in parenthesis)
 -  Clark County Light Rail - Proposed (hatched pale green lines, under study)
 -  Potential future rail rapid transit corridors (Hatched lines, unofficial or dormant plans)
- Disclaimer: Not an official TriMet map. Alignments subject to change



Light Rail project – Places of Convergence

neighborhoods
great think improve traffic family change reduce stores
economy transit help streets
choices
space
drive small costs
focus
options funding facilities involved
access community taxes good transportation home important buildings services housing healthy
money safety income support high people government power love local education
businesses need work get better pay public provide natural
care parents teachers parking property
health parks bike arts jobs living live safe green things sidewalks food many
increase well students question less Downtown quality





2001: Airport MAX – The power of partnerships

Intersections



2004: Yellow Line restoring neighborhoods



2009: WES Commuter Rail



2009: I-205 Green Line Light Rail



2009: I-205 Green Line Light Rail



2009: I-205 Green Line Light Rail



2009: Green Line Light Rail – Portland Mall Revitalization project



2009: Green Line – The Portland Mall becomes... a Great Street



2009: Green Line Light Rail – Portland Mall Revitalization project

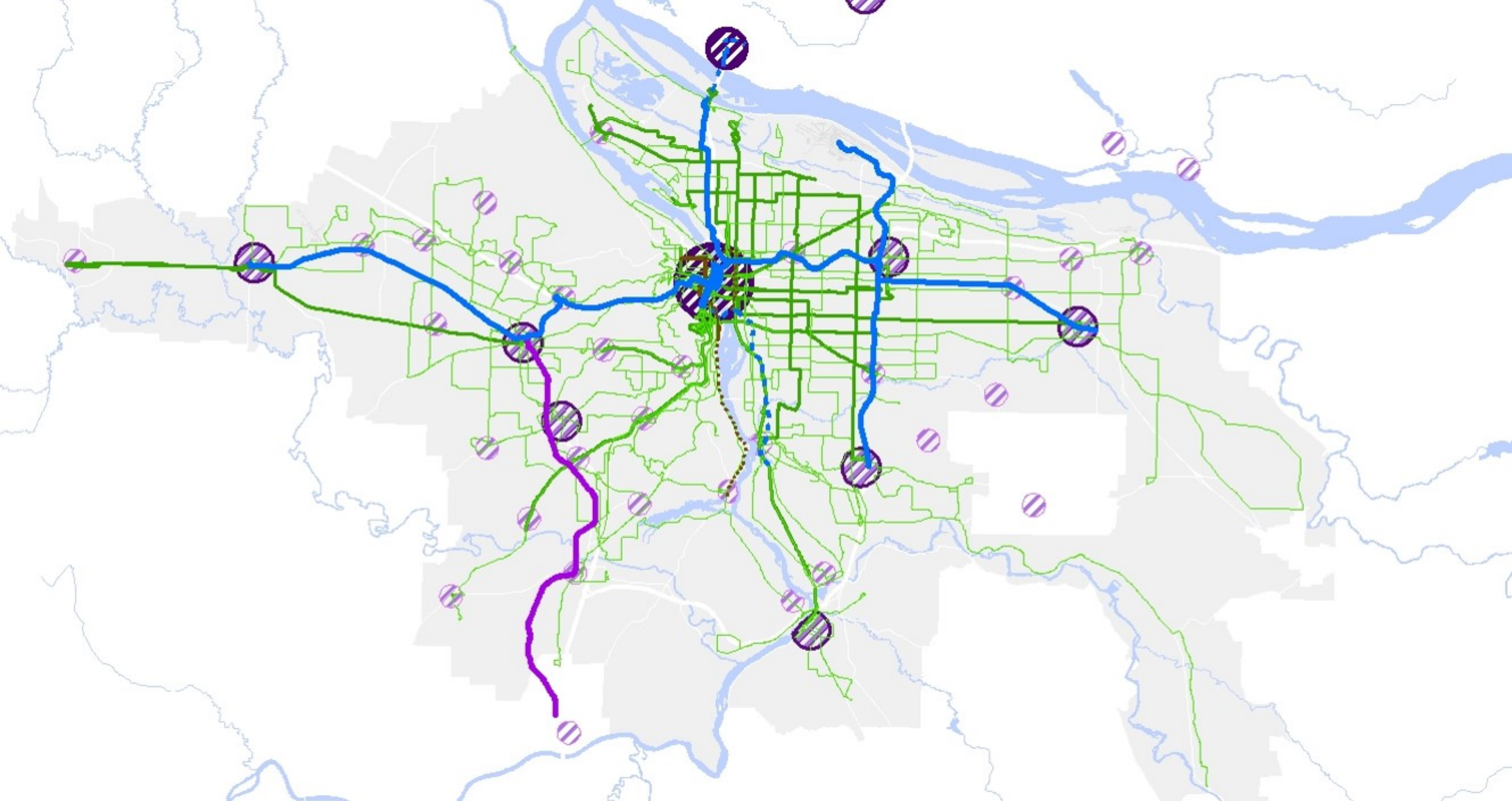


2009: Green Line – The Portland Mall becomes... a Great Street

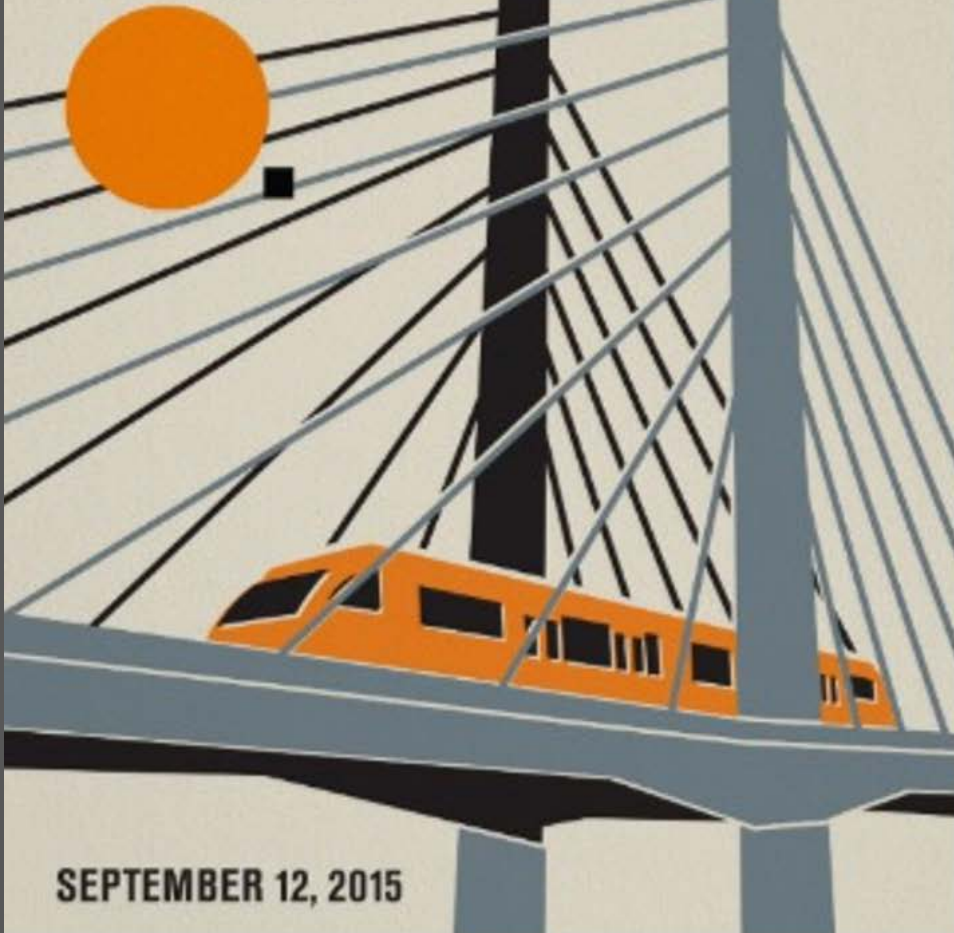


Hennebery Eddy Architects, Inc.

Integrating Transit with Community Development



Catch the



SEPTEMBER 12, 2015



2015: Portland/Milwaukie – Bridging to the next generation



Bridging to the next generation





© Josh Partee

Creating an Integrated Future...a part of the nature of the city



© Josh Partee



© Josh Partee

Creating an Integrated Future...a part of the nature of the city





Creating an Integrated Future...a part of the nature of the city



Commitment to our Future



What do we value about Portland...



What do we value about Portland...



What do we value about Portland...



What do we value about Portland...



What do we value about Portland...



What do we value about Portland...



What do we value about Portland...



What do we value about Portland...



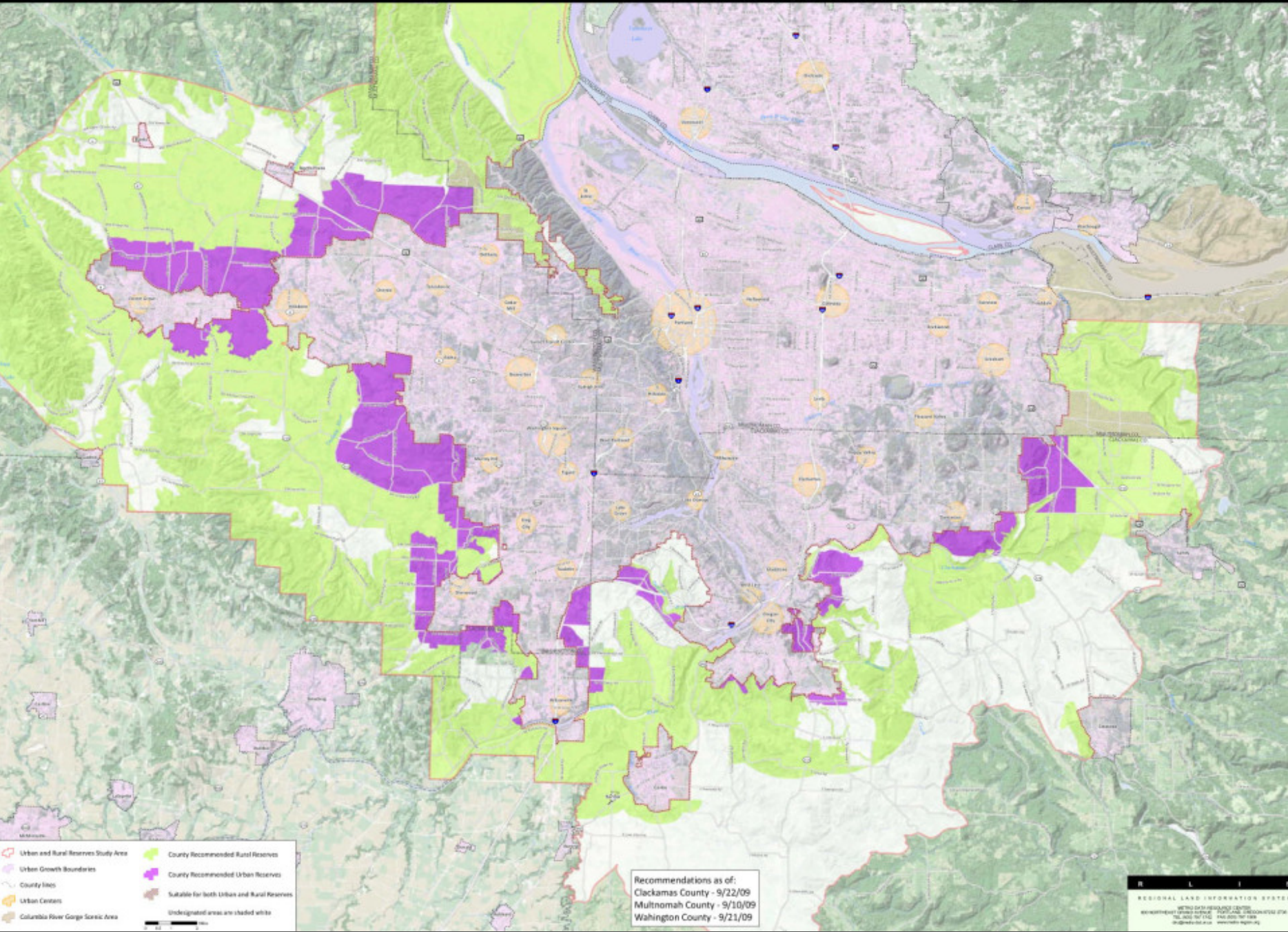
© Jeremy Bittermann

What do we value about Portland...



What do we value about Portland...

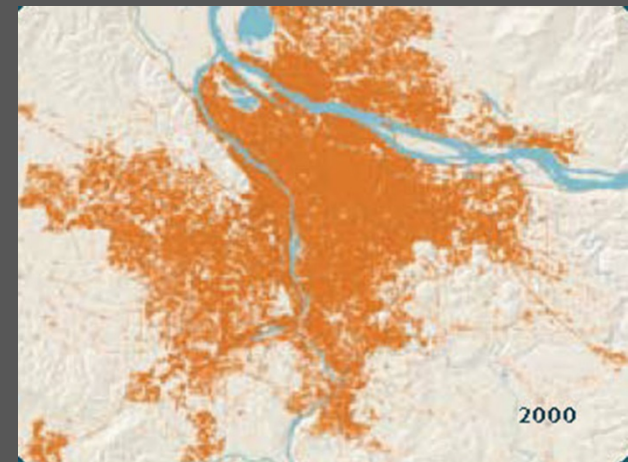
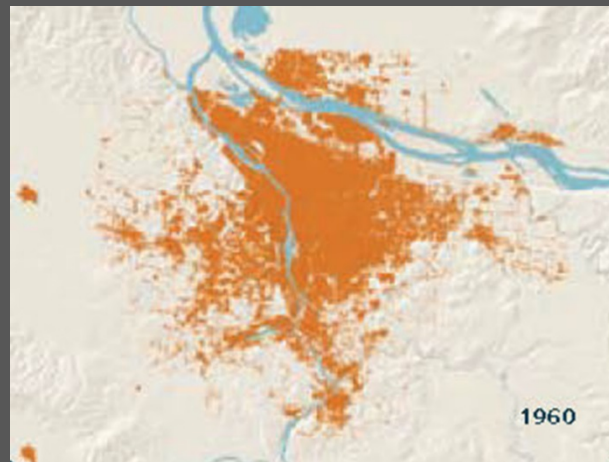
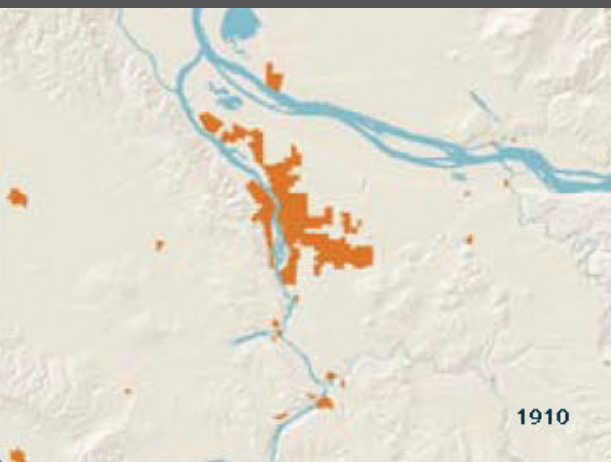




- Urban and Rural Reserves Study Area
- County Recommended Rural Reserves
- County Recommended Urban Reserves
- Suitable for both Urban and Rural Reserves
- Urban Growth Boundaries
- County Lines
- Urban Centers
- Columbia River Gorge Scenic Area
- Underlabeled areas are shaded white

Recommendations as of:
 Clackamas County - 9/22/09
 Multnomah County - 9/10/09
 Washington County - 9/21/09

REGIONAL LAND INFORMATION SYSTEM
 METRO DATA DEVELOPMENT CENTER
 1000 NE MULTNOMAH AVENUE, SUITE 2000, PORTLAND, OREGON 97232
 TEL: 503.944.1111 FAX: 503.944.1110
 www.metroregis.com www.metroregis.org



50% more people will be living in Portland by 2030



#1

effective business tax rate
in the U.S.

#2

location in the U.S. for
new investment

\$0

sales tax

#2

most innovative state

TOP 5

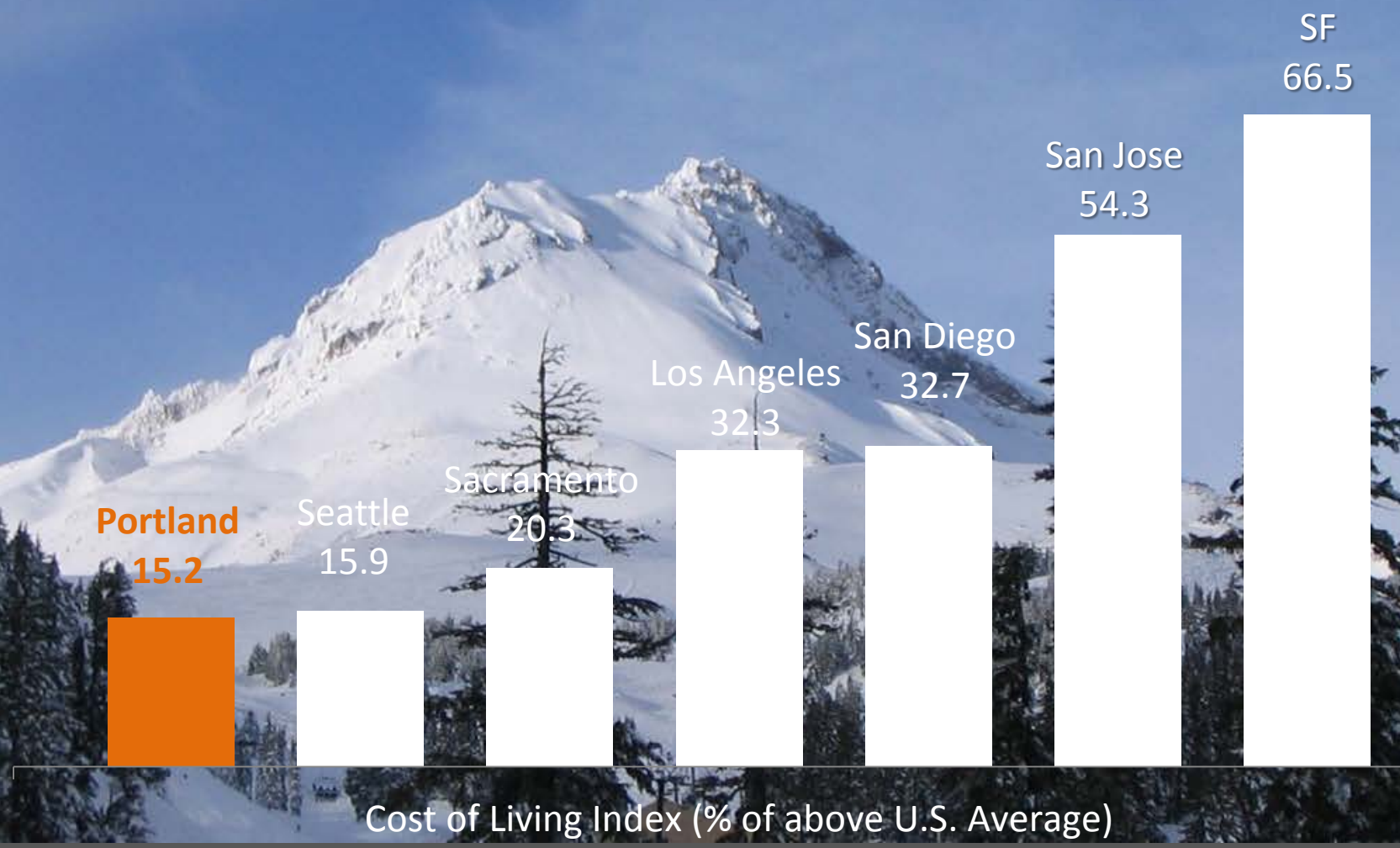
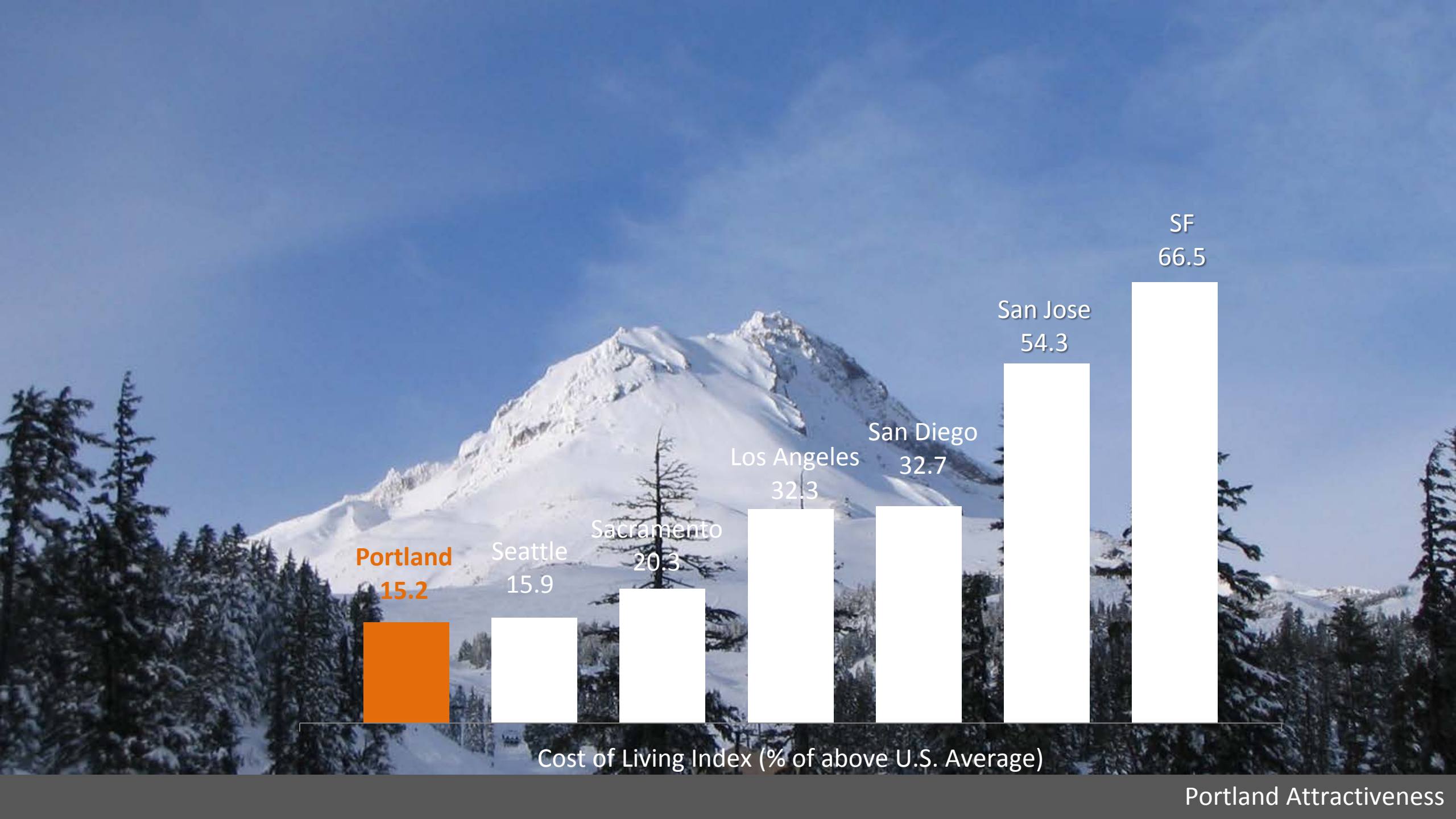
best state for quality of life

#1

manufacturing location

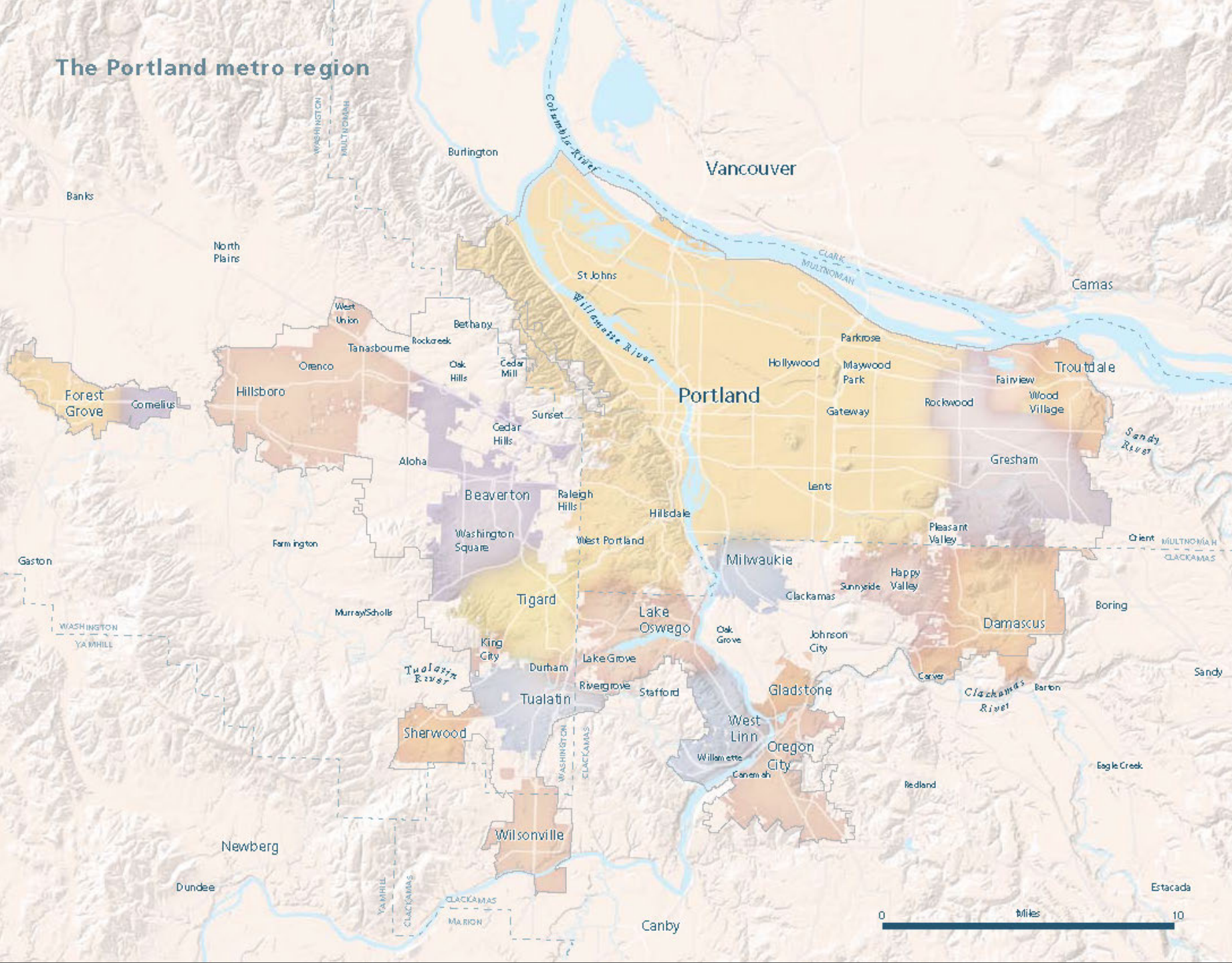
TOP 10

best state for business & overall
business climate



Cost of Living Index (% of above U.S. Average)

The Portland metro region



1,500,000 Residents w/n UGB

65,600 Businesses

33,229 acres of natural areas

830 miles of rivers and streams

25 cities

3 counties

1 region

HOME



Portland is a magnet for 24 - 35 year olds; one of the top 5 net importers of talent



Innovation - Outranking Chicago, Los Angeles & New York in Patents







#1 Greenest City in the U.S.



#1 Largest Sports Products Sector
in the U.S.



#1 in Output Growth
#2 in Export Intensity



#1 Most Livable City in the U.S.



#1 Largest Semiconductor
Manufacturing Industry in the U.S.



#1 Beer City in the U.S.



Top 10 Best U.S. Place to Retire



#1 Bike Friendly City



#1 Green Building Projects