

August 30, 2016, Pacifico Yokohama

The Sixth International Forum on the “Future City” Initiative, Break-out Sessions1: Community Building Where Diversity Creates New values

“Mirai Kanaenet”

ICT projects of medical, healthcare, and nursing in Ofunato City, Rikuzentakata City, and Sumita Town

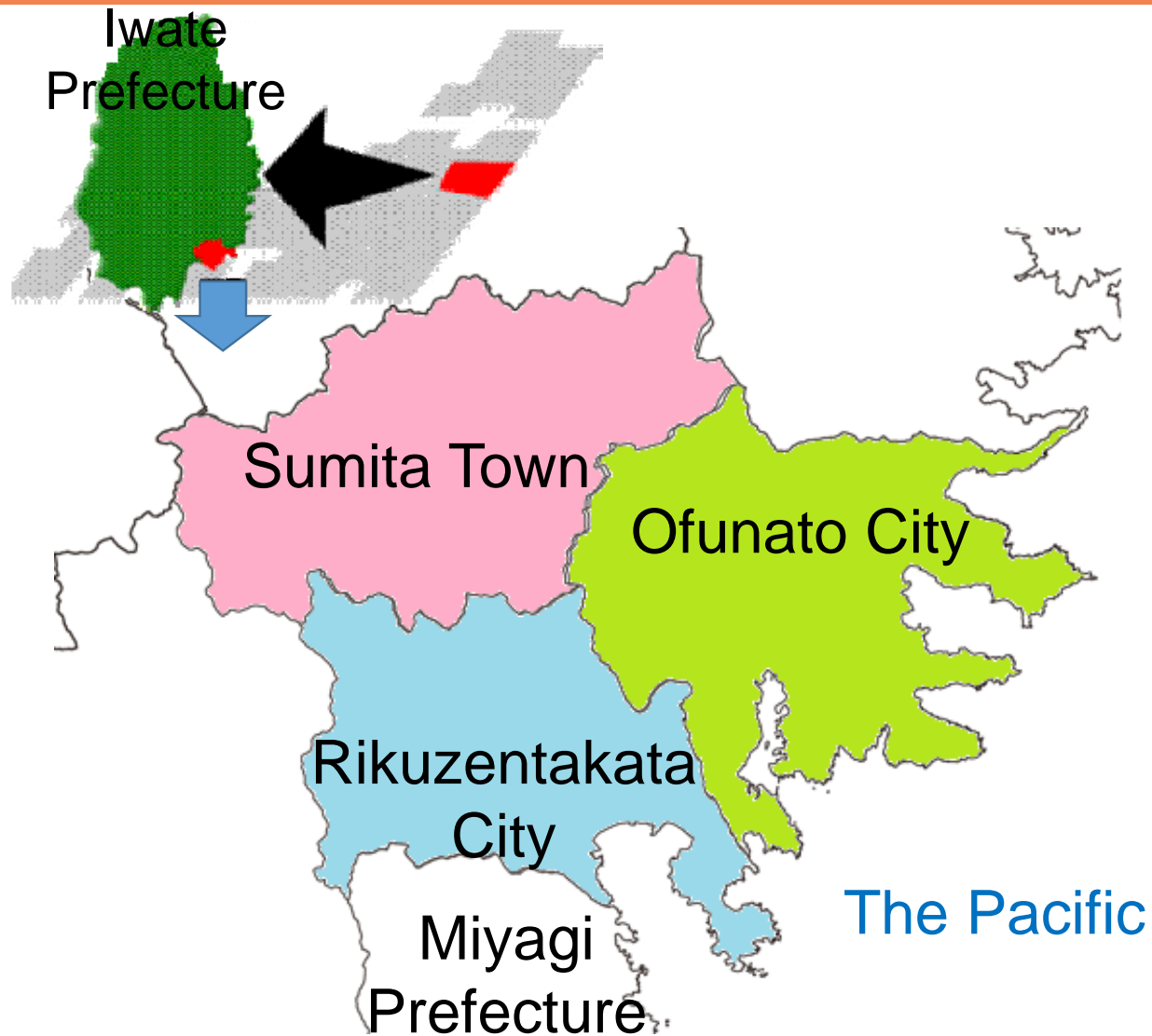
Tamotsu Takita and Tatsuro Ito, Mirai Kanae Institution Project



<http://www.kanaenet.com/>



Kesen area



Population: 63,548
Decreased by 9.5%
between 2010 and 2015
Percentage of elderly: 34.0%

Healthcare providers
For 100,000 people (Iwate Prefecture)

Medical doctors
150.8 (199.8) National average: 237.8

Dentists
27.8 (79.4)

Pharmacists
27.5 (33.7)

Nurses and assistant nurses
658.7 (872.9)

Great East Japan Earthquake and associated tsunami on March 11, 2011

Ofunato City
Rikuzentakata City
Nationwide

ilities
19/35
2/3
18/29
52/90



Photographed by Dr. Masahiro Ueno at Takata Hospital, Iwate Prefecture

The launch of Mirai Kanae Institution Project

2012: Joint Council for Healthcare, Nursing, Health and Welfare, Kesen Region
Future City

Mirai Kanae Institution Project was launched as one effort in Kesen Region's **Future City Plan** consisting of two cities and one town upon the selection by the Cabinet Office.

- [1] Reinforcement of nursing care provider (regional comprehensive care) [2] Construction of regional collaboration ICT
- [3] Invitation of medical care providers [4] Deregulation

March 2014: The name was changed to Mirai Kanae Consultation

- [1] The objective is to construct a regional medical and nursing care collaboration system using ICT
- [2] A project to invite medical and relevant professionals to disaster-hit areas using a helper colony
- [3] Kesen general partner (GP) nurturing project

April 2015: Establishment of General Incorporated Association Mirai Kanae Institution

- [1] Establishment of a regional collaboration ICT Mirai Kanaenet
- [2] Reinforcement of nursing care providers Regional nursing ability project

April 2016: Start of Mirai Kanaenet

Starting with workshops with the participation of people from various occupations

Participating facilities

Public health offices, Ofunato City, Rikuzentakata City, Sumita Town, prefectural hospital, medical association, dental association, elderly health care facility, special elderly care facility, at-home nursing station, companies, etc.

Consisting of keynote lecture and workshops

1. Necessary information-sharing system
2. Challenges in the development of information-sharing system
3. Features of systems to establish



Necessary regional medical and nursing information-sharing system for a region

1. Establishment of database for medical and nursing information and storage of data
2. Information-sharing in regional comprehensive care Integration of medical and nursing information
 - Interactive
3. Pediatric and worker health support functions From the elderly to all age groups
 - Prevention, early detection, illness management, emergency care



The objective is to help residents lead healthier and more comfortable lives

Characteristics of the establishment of Mirai Kanaenet

1. Careful selection of companies, separation of design and implementation
2. Interactive operations without the use of digital medical charts as a prerequisite
3. Integration of healthcare and nursing
4. Network to implement interprofessional work (IPW)
5. Operation paid for by governments and users
6. All townspeople are eligible for participation

Careful selection of companies (competition): Separation of design and implementation

1. Selection of a design firm (consultant) Healthcare relations

- Definitions of conditions to suit concepts
- Continuous and constructive plans, assistance, and management
- Promotion by townspeople
- Social responsibility

2. Selection of vendor Japan Unisys

- Compatibility between definitions of conditions and specifications i.e., Yr.Canvas-en[®]
- Possibility of expansibility and development

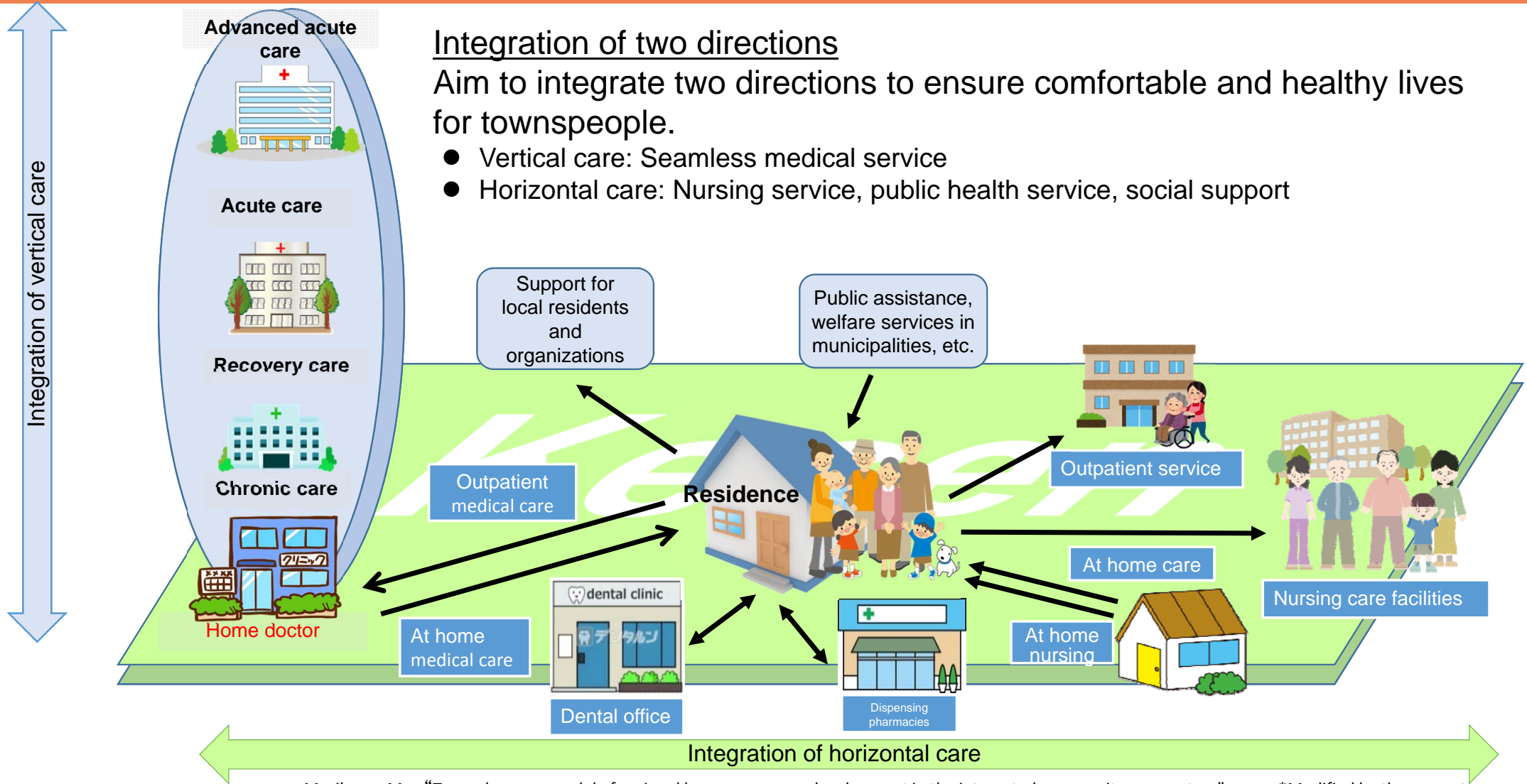
Request from Iwate Prefecture: Separation of design and implementation, disciplined use of funds, incorporation of operating organizations, ensuring continuity

Integration of healthcare and nursing

Integration of two directions

Aim to integrate two directions to ensure comfortable and healthy lives for townspeople.

- Vertical care: Seamless medical service
- Horizontal care: Nursing service, public health service, social support



Concept of operating cost

Running cost

User participation fee (annual)

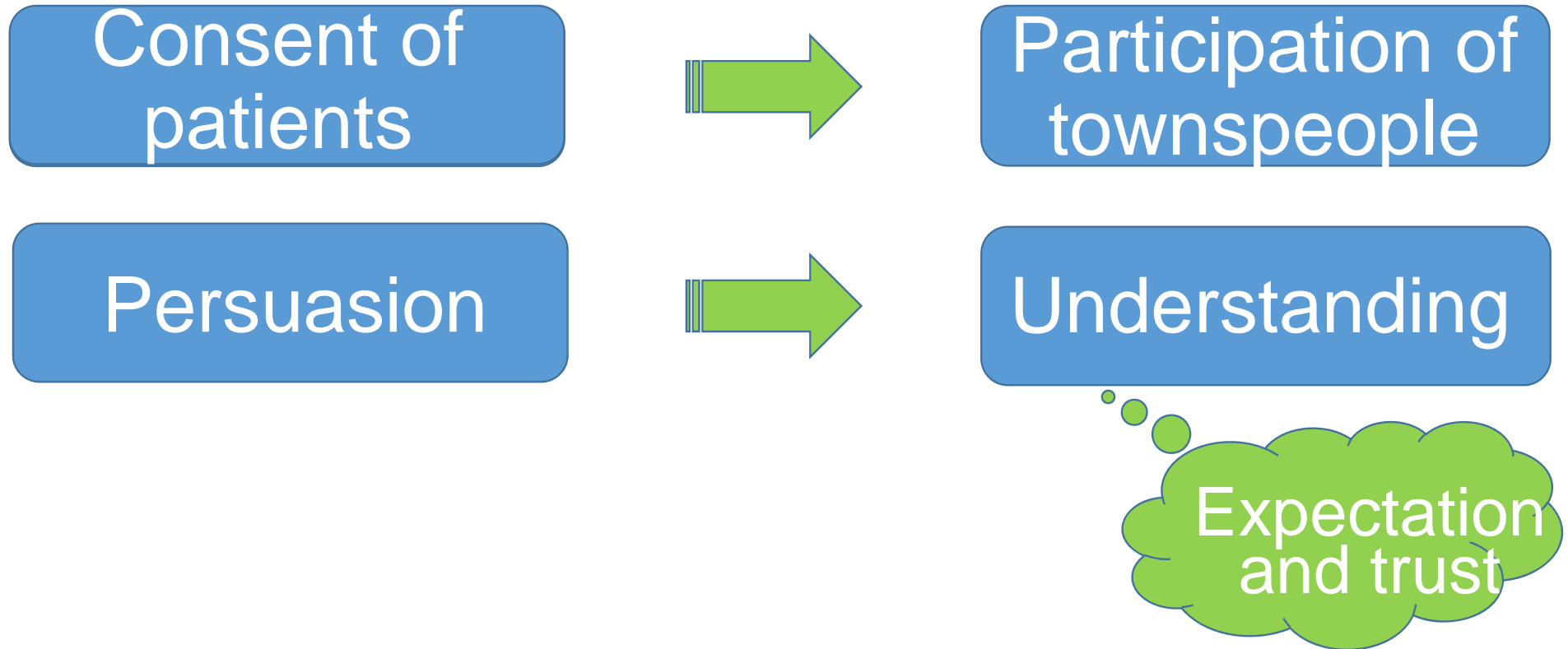
[1] Medical:	180,000	reading range 100%
[2] Dental:	120,000	90%
[3] Pharmacy:	120,000	90%
[4] Nursing:	96,000	60%

To prepare for the replacement in five years

Assistance for the two cities and one town

[1] Maintenance cost, [2] Supplementation for the secretariat operation cost, [3] Reserve fund for risks

Participation of townspeople



Promotion by townspeople

Phases in the establishment of Mirai Kanaenet

First phase

Establishment of the foundation and model phase of Kesen Regional Healthcare and Nursing Collaboration System
Start of operation from April 2016

Target of the establishment

- Establishment of the foundation for collaboration in the Kesen area
- Regional medical care regeneration fund
- Participation of 3,000 townspeople
Operation in 23 facilities through the participation of users

As of August 1

Participating townspeople: 5,611

42 facilities with user participation

Second phase

Start of healthcare and nursing collaboration in all regions using the Kesen Regional Healthcare and Nursing Collaboration System
Start of operation from April 2017

Target of the establishment

- Completion of the application in the entire Kesen region and facilities
- Regional medical care regeneration fund
- Start of ICT for nursing and care
- Establishment of ICT for regional collaboration pass and emergency care information
- Establishment of ICT for health management

Participating townspeople: 10,000

Participating townspeople: 20,000

Third phase

Establishment of ICT social foundation for the comprehensive regional care system in the Kesen area
Start of operation from April 2018

Important points in establishing regional healthcare and nursing information network

- 1 **Realization of interactive operations** without the use of digital medical charts as a prerequisite
 - 2 **Integration of healthcare and nursing information**
 - 3 **Information sharing and communication** to practice interprofessional work
 - 4 **Maximization of the values of users through participation of townspeople**
- Regional healthcare and nursing collaboration network with the participation of townspeople
- These are the prerequisites for ensuring continuity and return on the investment in regional healthcare and nursing collaboration

