

未来  
都市

# Disaster, reconstruction, and a future eco-city



Minamisoma City,  
Fukushima  
Prefecture

# Damage from the March 11 disaster

## Magnitude 9.0

○人的被害 (平成24年1月31日現在)

・ 631 dead ・ 7 missing ・ 59 injured (2 severely, 57 lightly)

	住民基本台帳人口	市内居住者	市外避難者	所在不明者
計	(2011. 2. 28現在) 71, 494人	43, 380人	26, 383人	(死者含む) 1, 731人

○Damage to housing (as of 26 August 2011)

Intact **23,898**      Damaged or destroyed **1,635**



○Area hit by tsunami (as of 8 April 2011) approx. **40.8 km<sup>2</sup>**



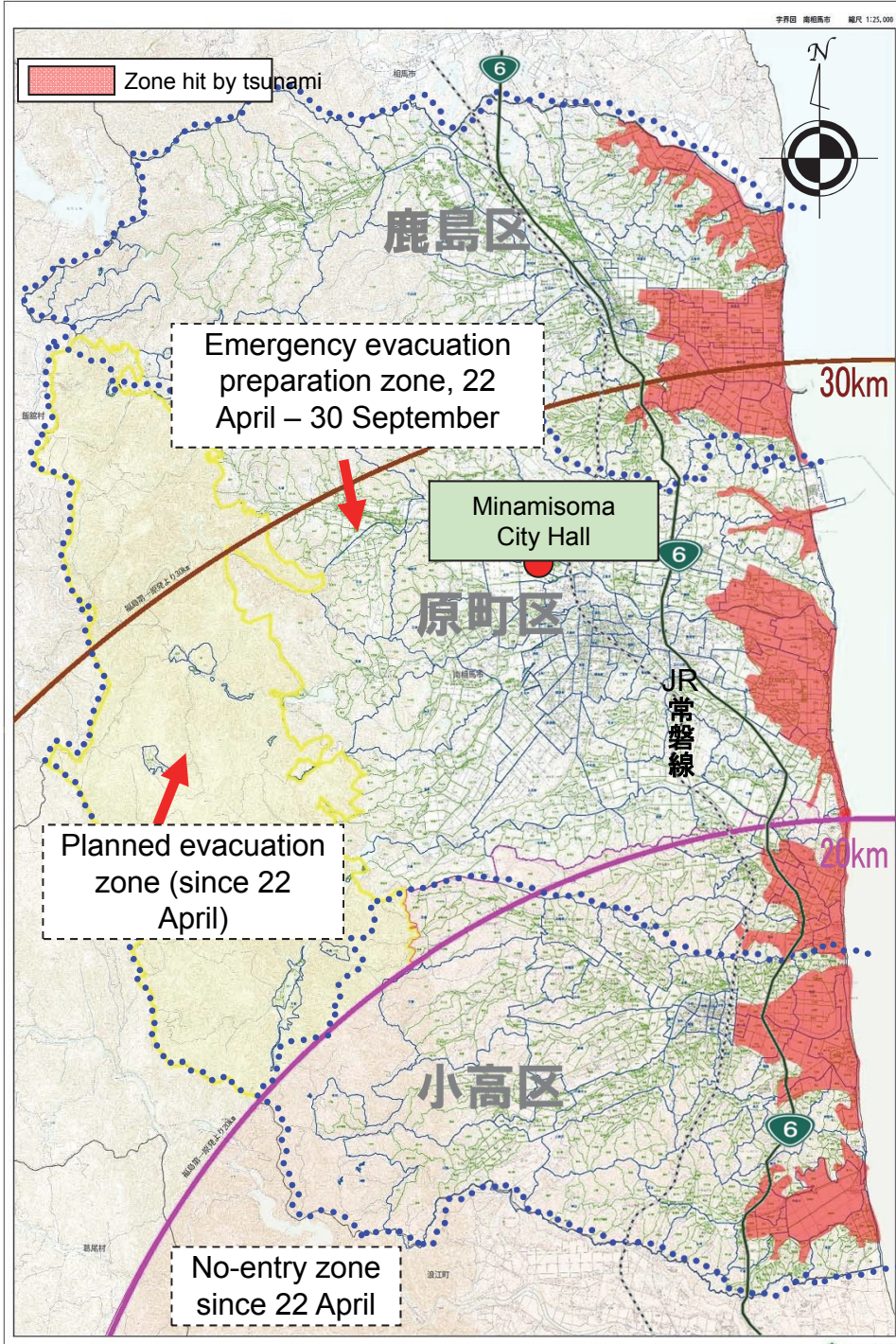
○Environmental radiation levels (unit:  $\mu\text{Sv/h}$ )

Location of testing	Highest reading	Reading on 31 January
Minamisoma City Hall (around 24km north of plant)	20.0 (2011.3.12)	0.14
Yokokawa Dam, Minamisoma (around 22km NNW of plant)	2.14 (2011.5.7)	1.54

○Estimated area of lost farmland/flooding (ha)

Arable land area (2010)	Lost farmland, flooding	
	Estimated area affected	Ratio
8,400	2,722	32.40%

- Goods (fuel) shortage
- Medical staff shortage
- Transport network cut
- Firms/offices pull out
- Cut off from outside information





# Issues and challenges faced by Minamisoma

Community breakdown

Local economy devastated

Depopulation and changed demographics

Collapse of local health and welfare systems

Radiological contamination

and more



## Minamisoma City plan for reconstruction

Minamisoma City Reconstruction Plan Basic Policy

- All citizens return to rebuild a town connected by local bonds
- Changing adversity into opportunity
- Creative and vigorous economic revitalization
- Safe and secure development proudly overcoming nuclear disaster

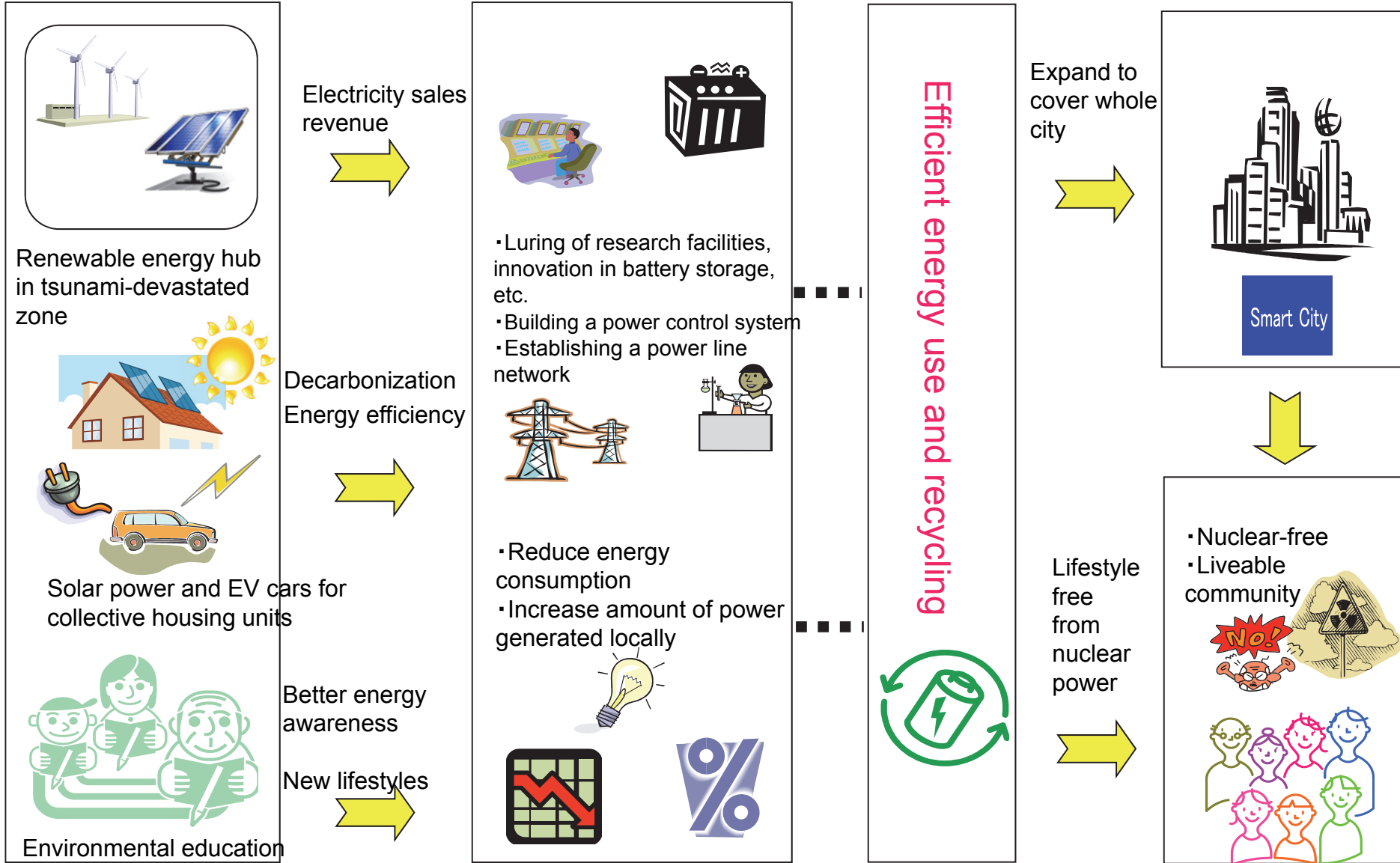


## Eco-city action plan

(Categories proposed for future eco-city project)

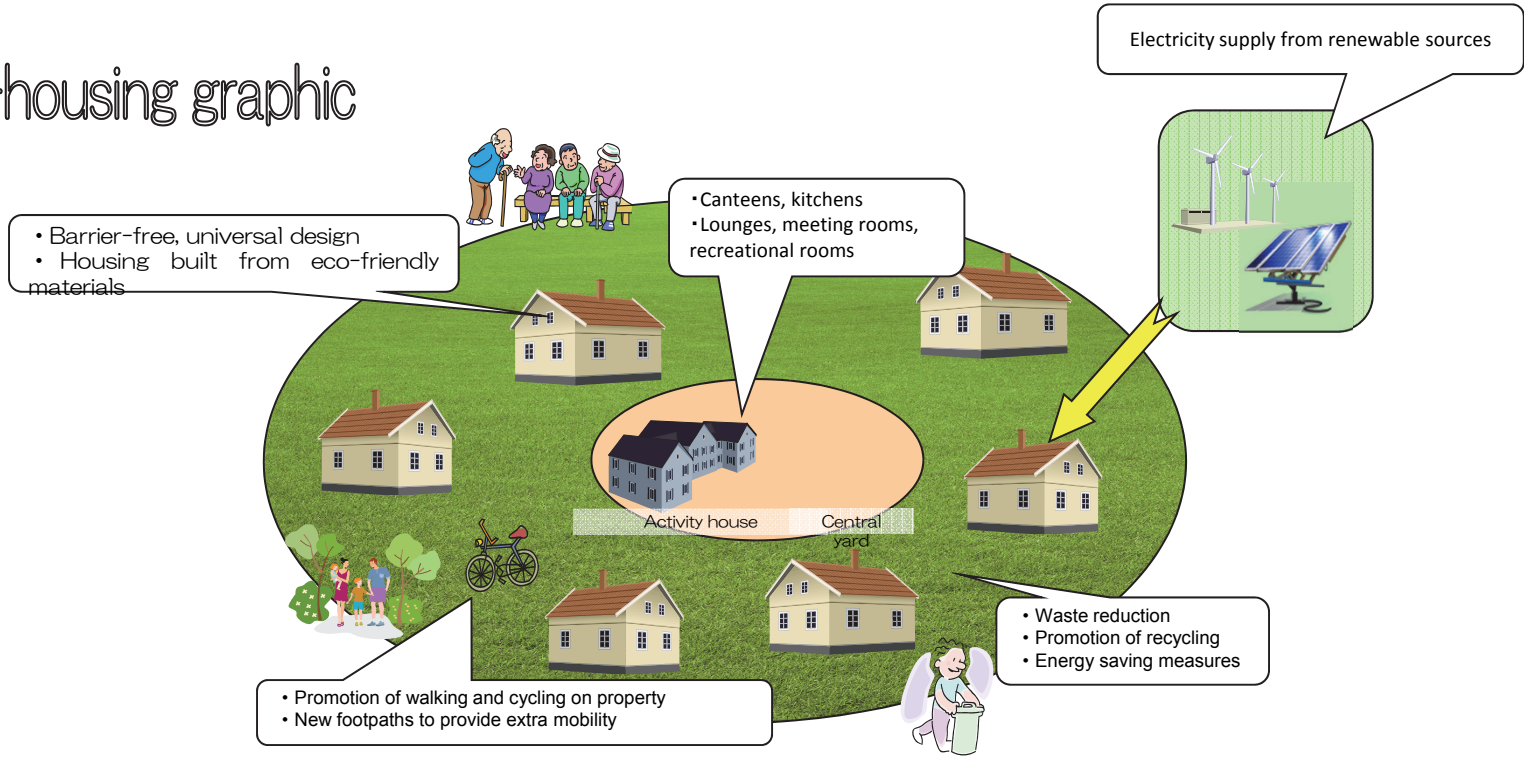
- A mixed generation town liveable for everyone
- Creation of recycling community industry based around the EDEN plan
- An energy-recycling Smart City

# 1. An energy-recycling Smart City

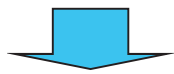


# 2. A mixed generation town liveable for everyone

## Co-housing graphic



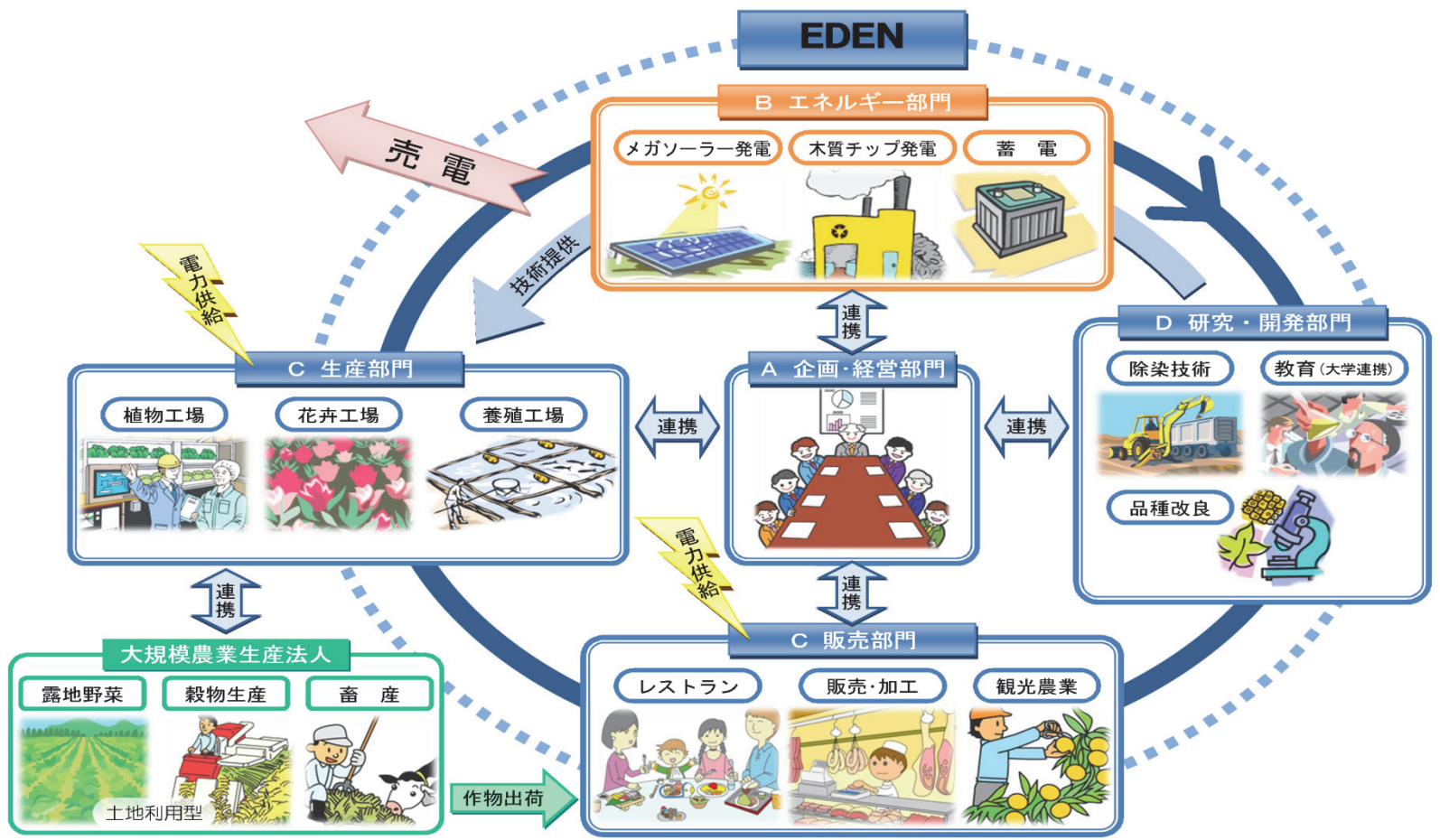
Measures are being taken in coordination with the relocation of villages devastated by the tsunami to rebuild local communities so that people can live happily, healthily, and independently as they age.



We are raising quality of life for residents, helping them return to their homes, and strengthening local communities in order to attain thriving generations from young to old.

### 3. Creation of a recycling community industry based around the EDEN plan

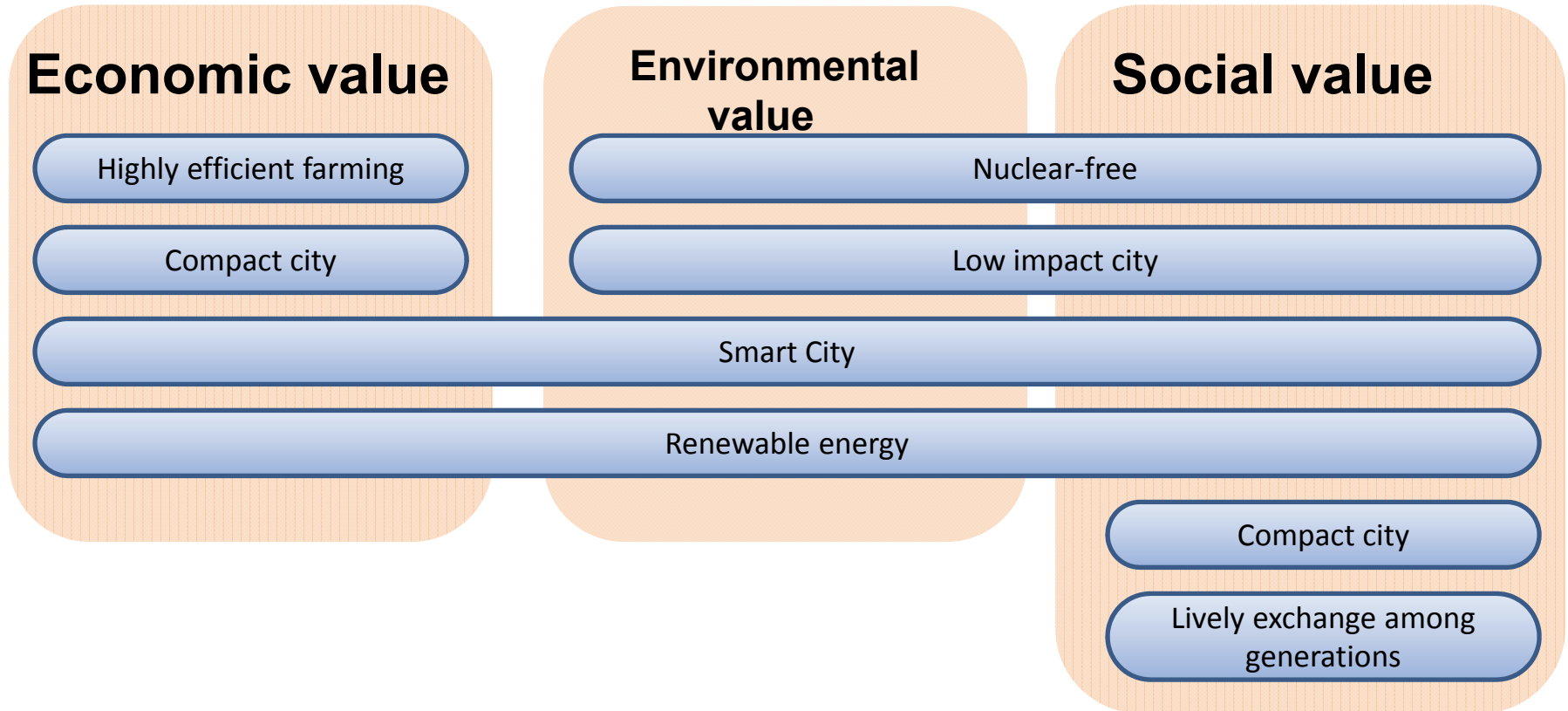
Minamisoma City's broad coastal farmlands were devastated by the tsunami. We have also faced bans on selling produce and reputational damage due to the nuclear crisis. To overcome this disaster and create a new local industry in Minamisoma, we are planning a futuristic farming model using green energy across the entire tsunami-affected zone.



EDEN stands for "Ecotown Design Enterprise of Nansou", a company that will design a new Minamisoma City using Earth-friendly methods.

# What is the objective here?

## ① Creation of value



**This nuclear-affected disaster zone aims to recover by changing adversity into opportunity!**



# Future development of Minamisoma

In 50 years

In 30 years

In 20 years

In 10 years

In 5 years

