

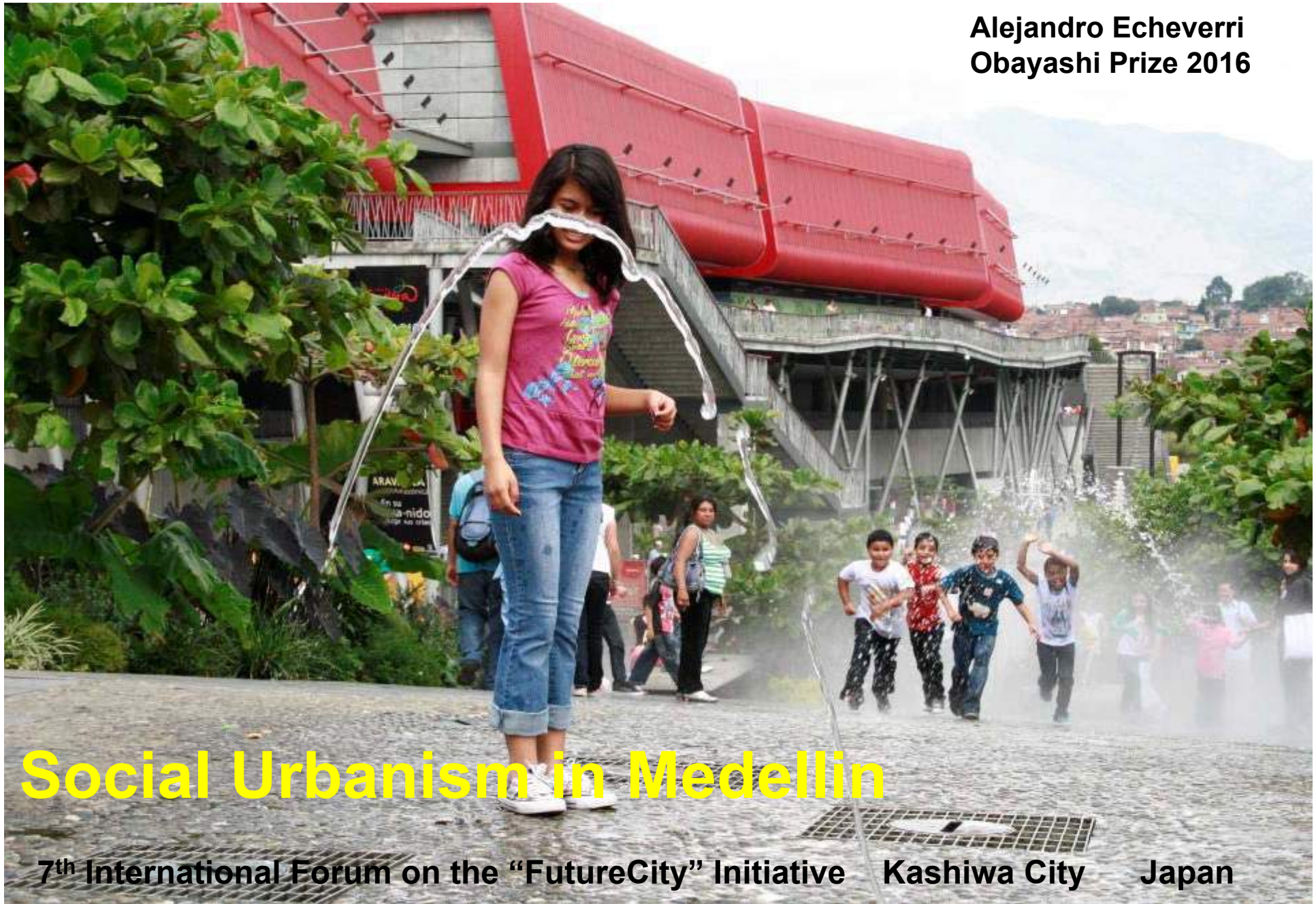
Alejandro Echeverri
Obayashi Prize 2016

Social Urbanism in Medellin

7th International Forum on the “FutureCity” Initiative Kashiwa City Japan

Inspira Crea Transforma

UNIVERSIDAD
EAFIT
Centro de Estudios
Urbanos y Ambientales





Colombia

country of regions

Medellin

Andean city surrounded by mountains

Medellin, Colombia's second most important city, has 3.5 million inhabitants in its metropolitan area. It is located in a valley and is surrounded by mountains.

During the 1980s and 1990s, drug trafficking came to dominate part of the city, and this made its social segregation more visible. Most of the city's social and urban problems were concentrated in the north.



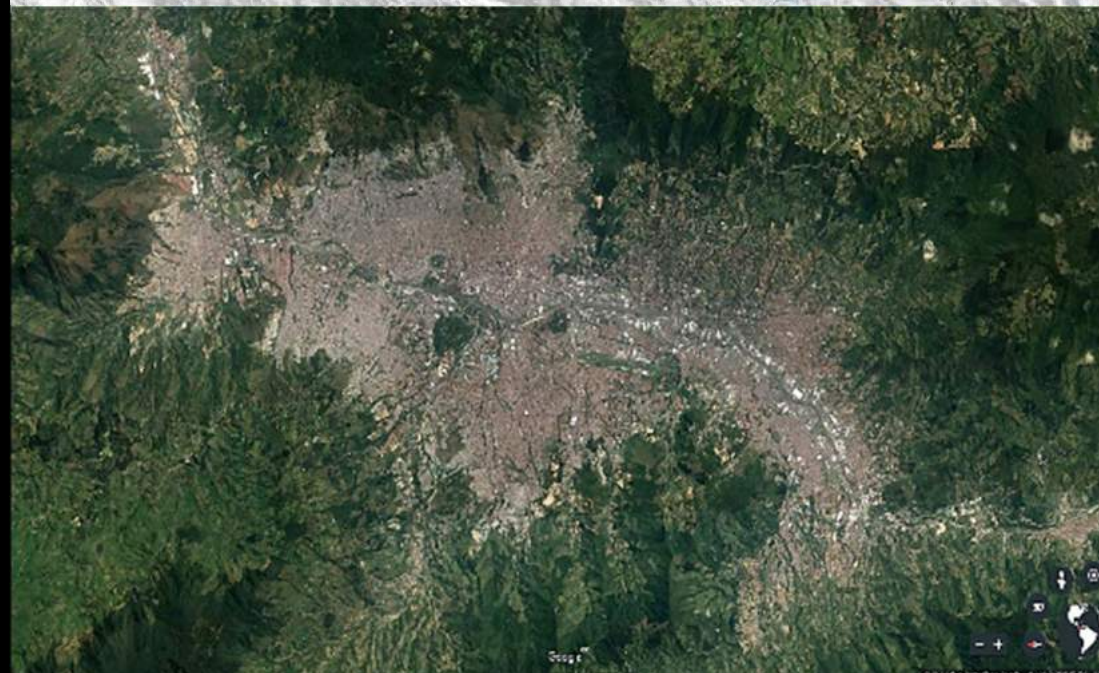
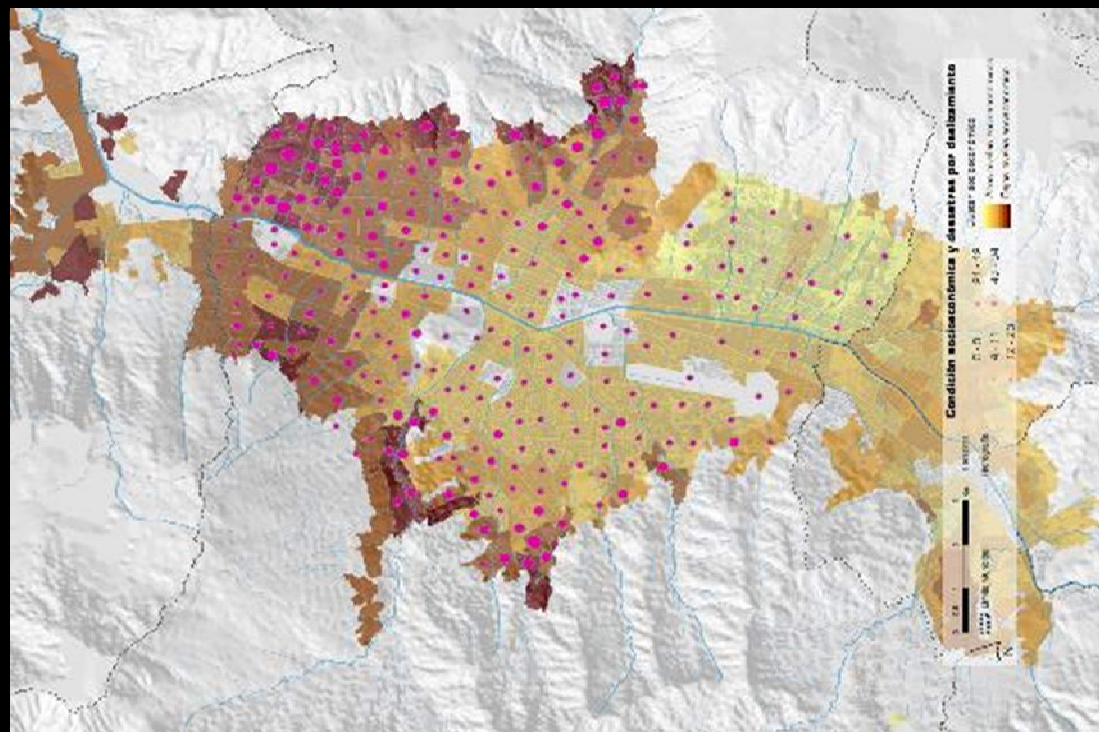




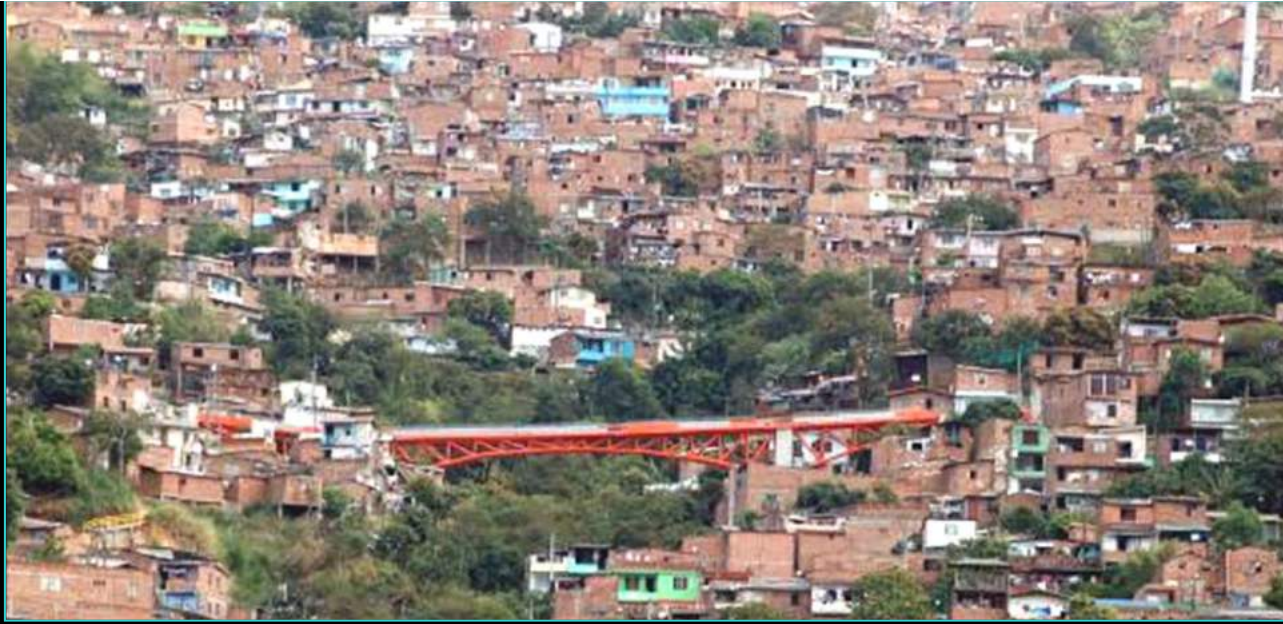
City of the Year 2012

Medellin

Medellín social segregation

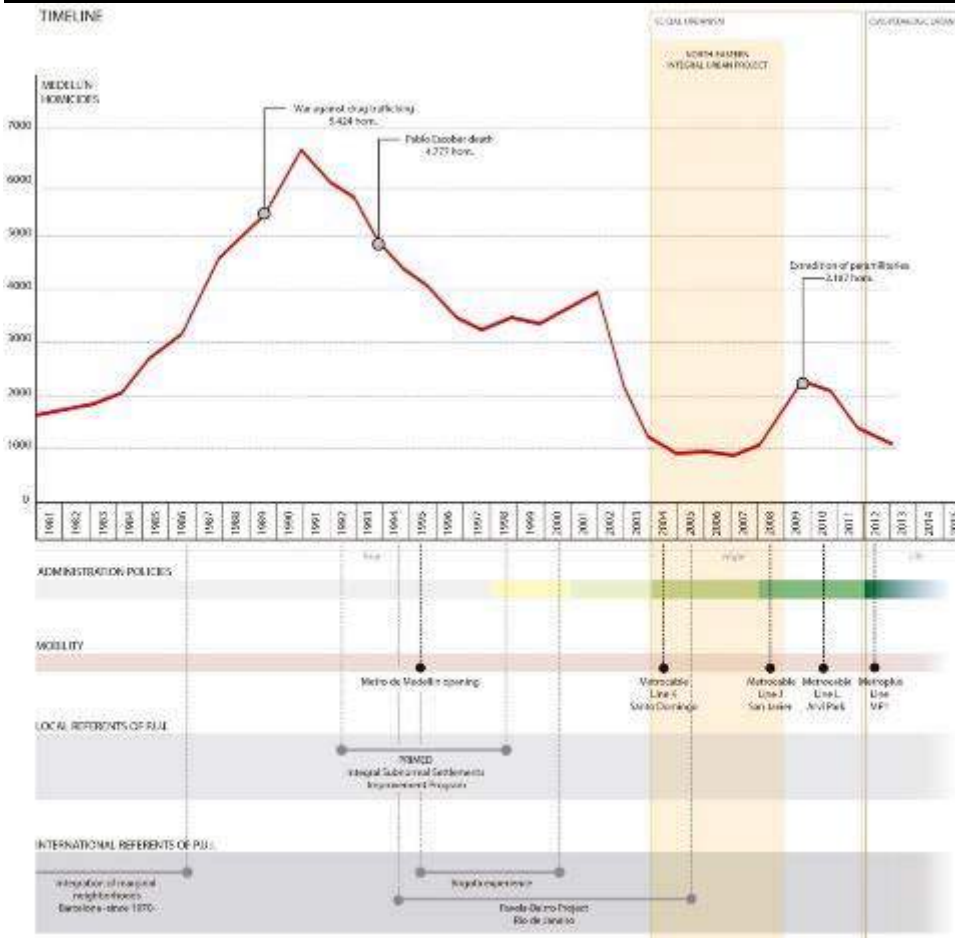


North



South





1991
 The most violent city in the world
 391 deaths per 100.000 inhabitants



Pájaros Parque San Antonio

Politics

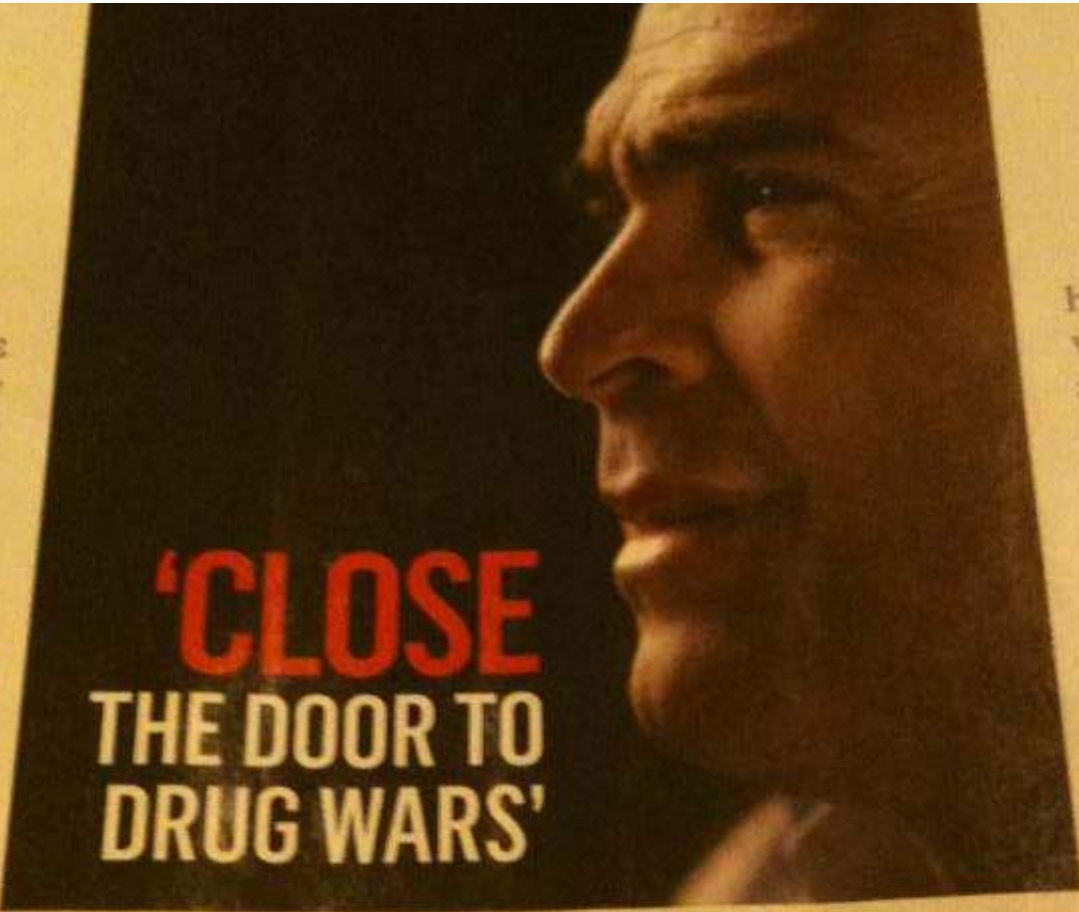
In 2003 Sergio Fajardo won the mayoral election and took office in January 2004. The civic forces that had arisen while the city suffered from the violence of the 1980s and 1990s now had the opportunity to put into practice proposals that supported a more equitable city.

Medellin became a living laboratory through educational, cultural social programs and physical transformations, that focused on its northern neighborhoods where the most structural inequity problems and violence existed.

2.003

ON THE RISE
bia, especially
s the military
ns against the
ncy. Murder
—while still a
990s peak—
e last three
he result of
s mayor of
3 to 2007,
ht to com-
plement-
with social

ty-stricken neigh-
he running mate
he runner-up in
ential election—
t's Mike Giglio
sing soft power
Latin America's



'CLOSE THE DOOR TO DRUG WARS'

selves here. That means quality educa-
tion, full public education—in science,
technology, innovation, entrepreneur-
ship, and culture.

HOW DOES ARCHITECTURE PLAY INTO THIS?

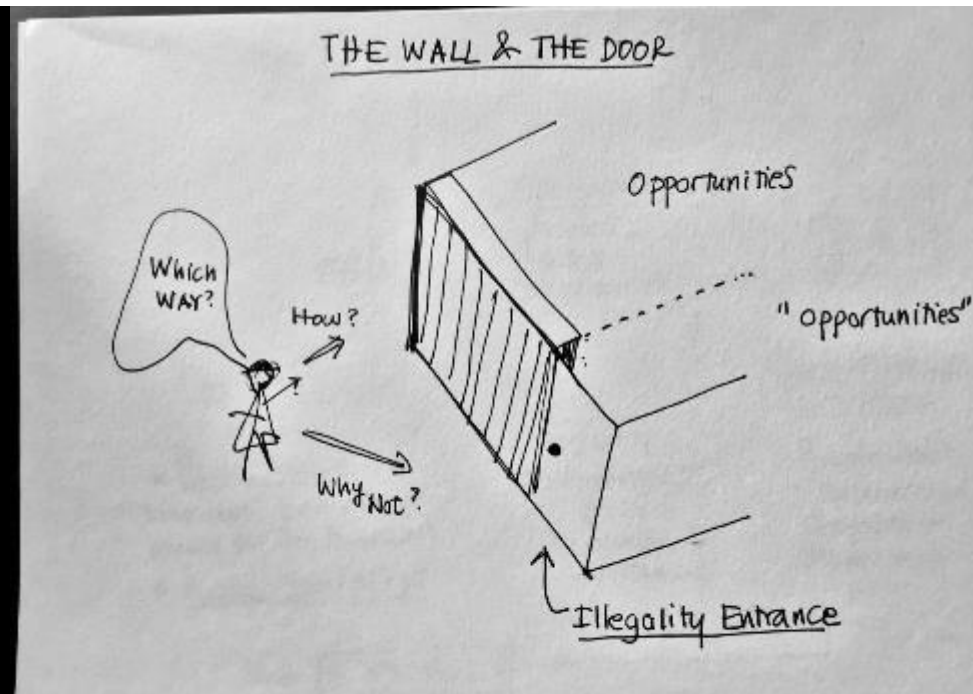
We are going to build the most beauti-
ful things for the humblest people in

have to
ventions
a drug
capture
is need
adres
this w

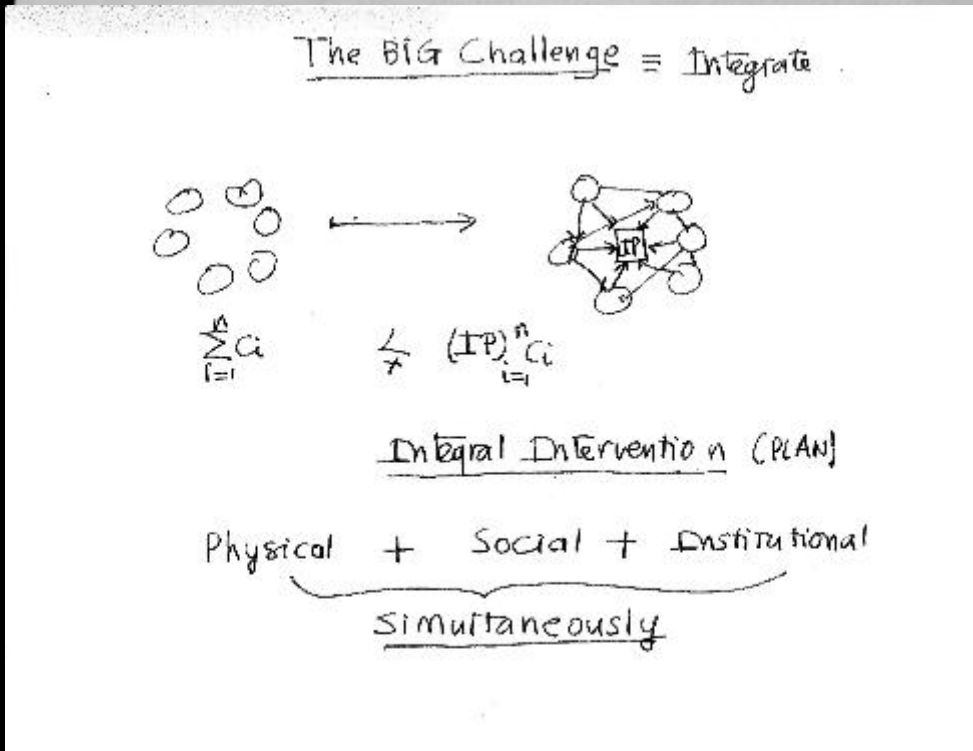
YOU
TER
THE
List
wh
fini

a very, very p
trafficking. B
force behind
associated w
bia. Colomb
battle again
have no do
improved.

Illegality & Opportunities



Integral interventions



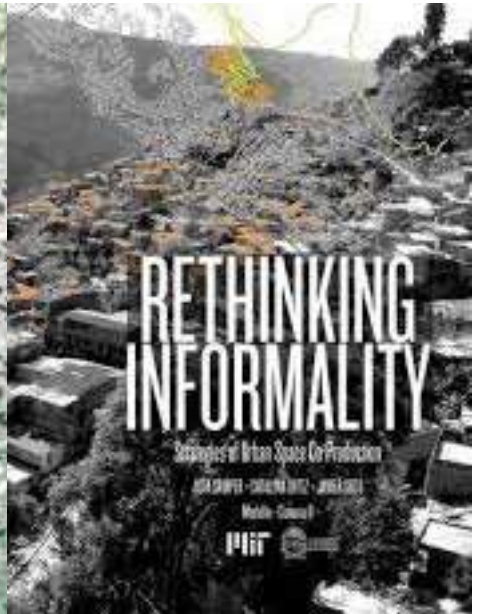
Social Urbanism 2004 - 2011

Violence and crisis had caused many streets to become the territory of illegal groups. The great challenge was to make the city more transparent, to open it, to build trust, and to change perceptions toward the city as a whole.

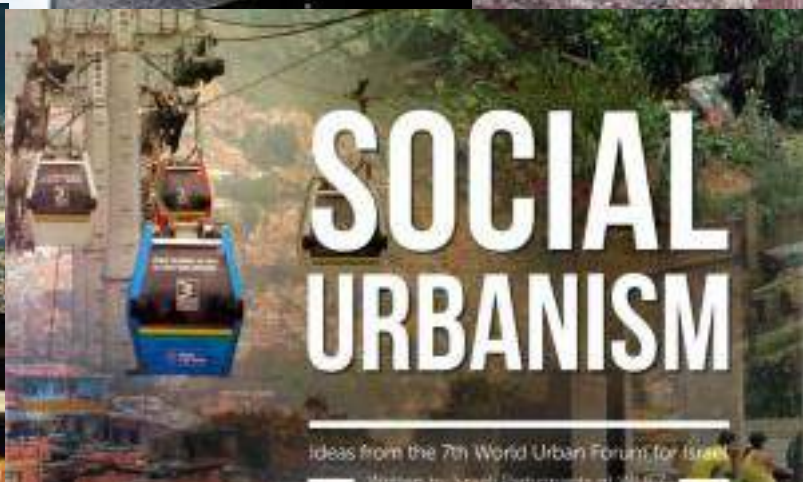
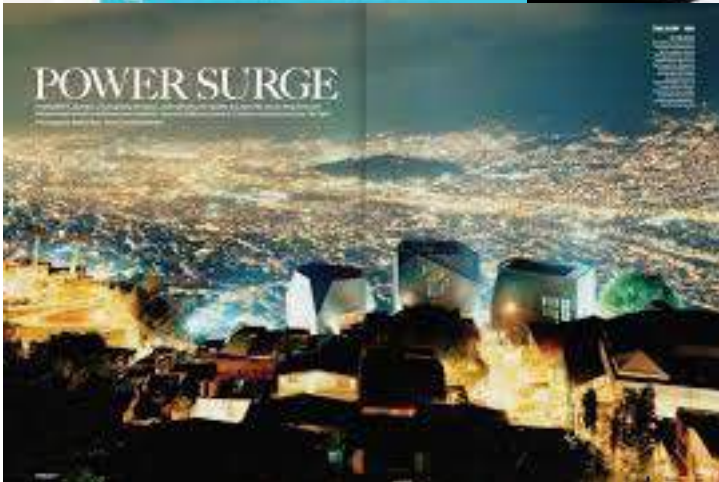
This was the essence of the various architectural and urban projects in which new urban spaces were conceived to develop inclusion and peaceful coexistence processes, and to improve the quality of everyday life.



LATIN AMERICA AT THE CROSSROADS



ENVIRONMENT URBANISM SOCIETY
MEDELLÍN ENVIRONMENT URBANISM SOCIETY

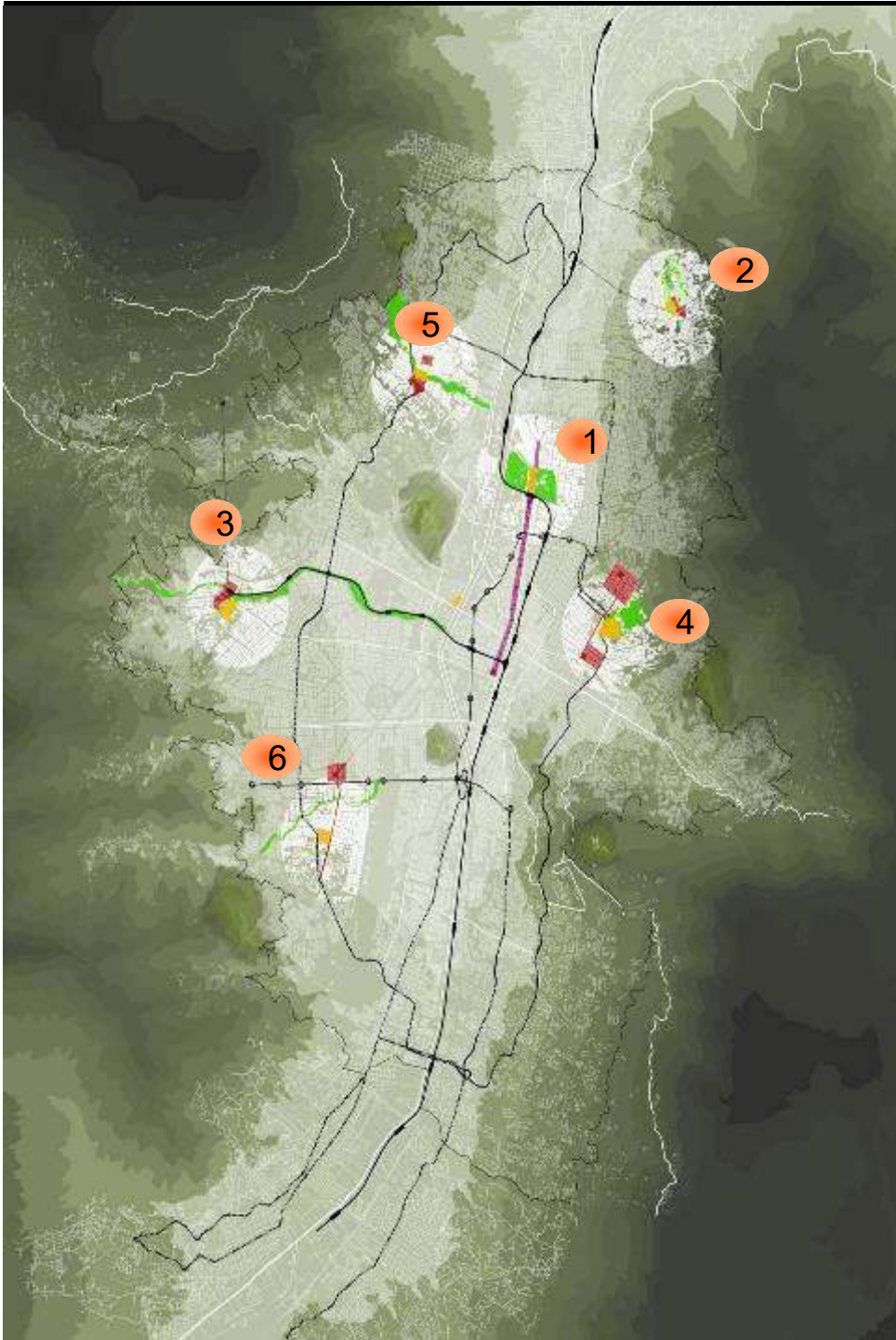




Japan's collaboration
Library Park Belen Medellin

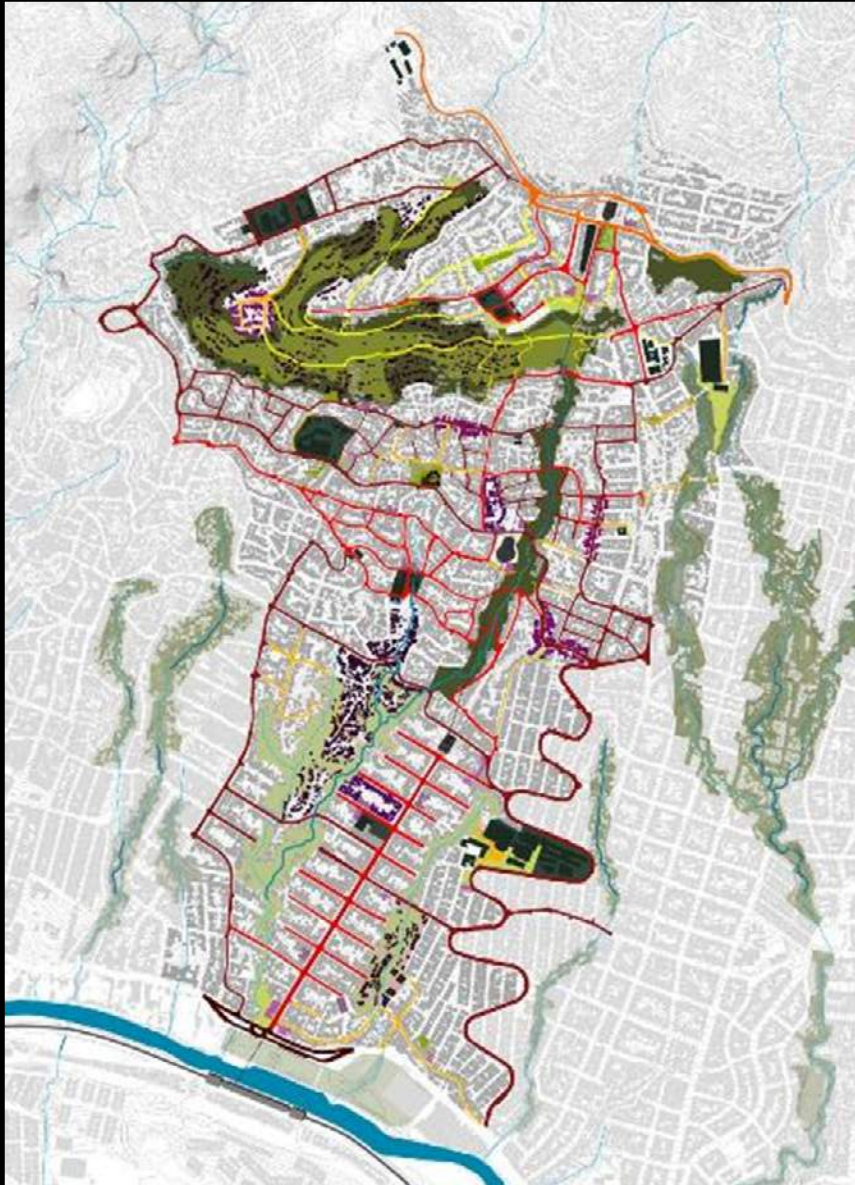
architect Hiroshi Naito



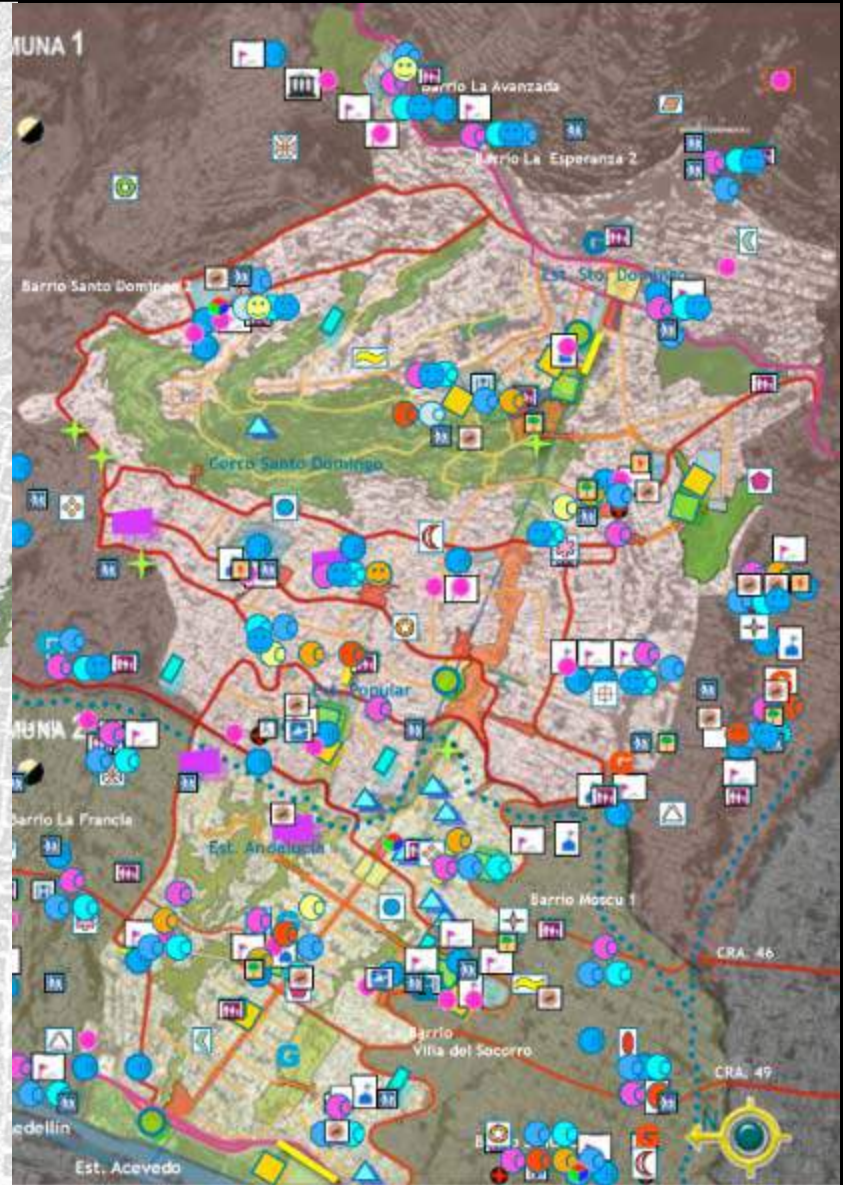


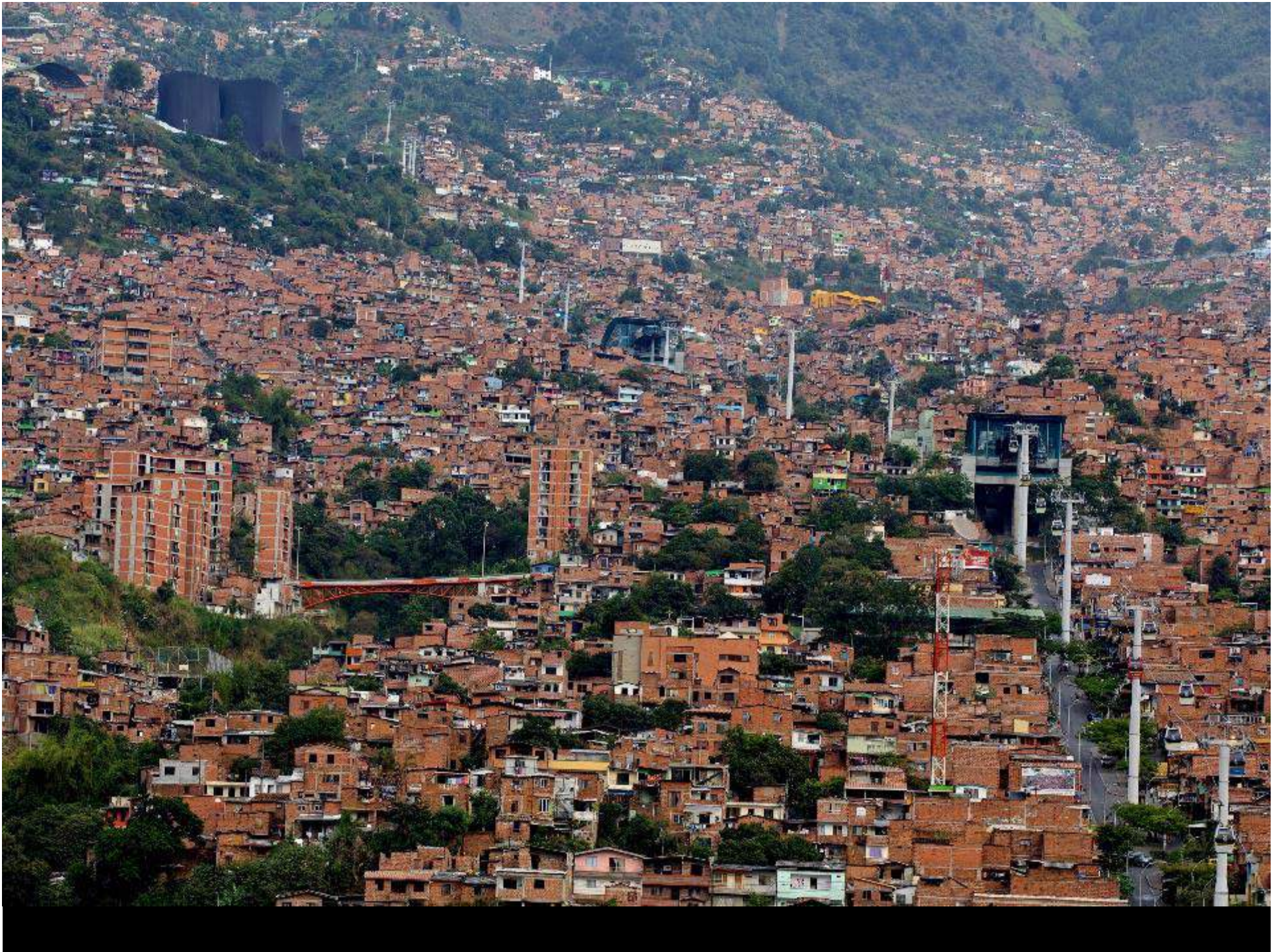
2 North Eastern Integral Project

Projects



Programs

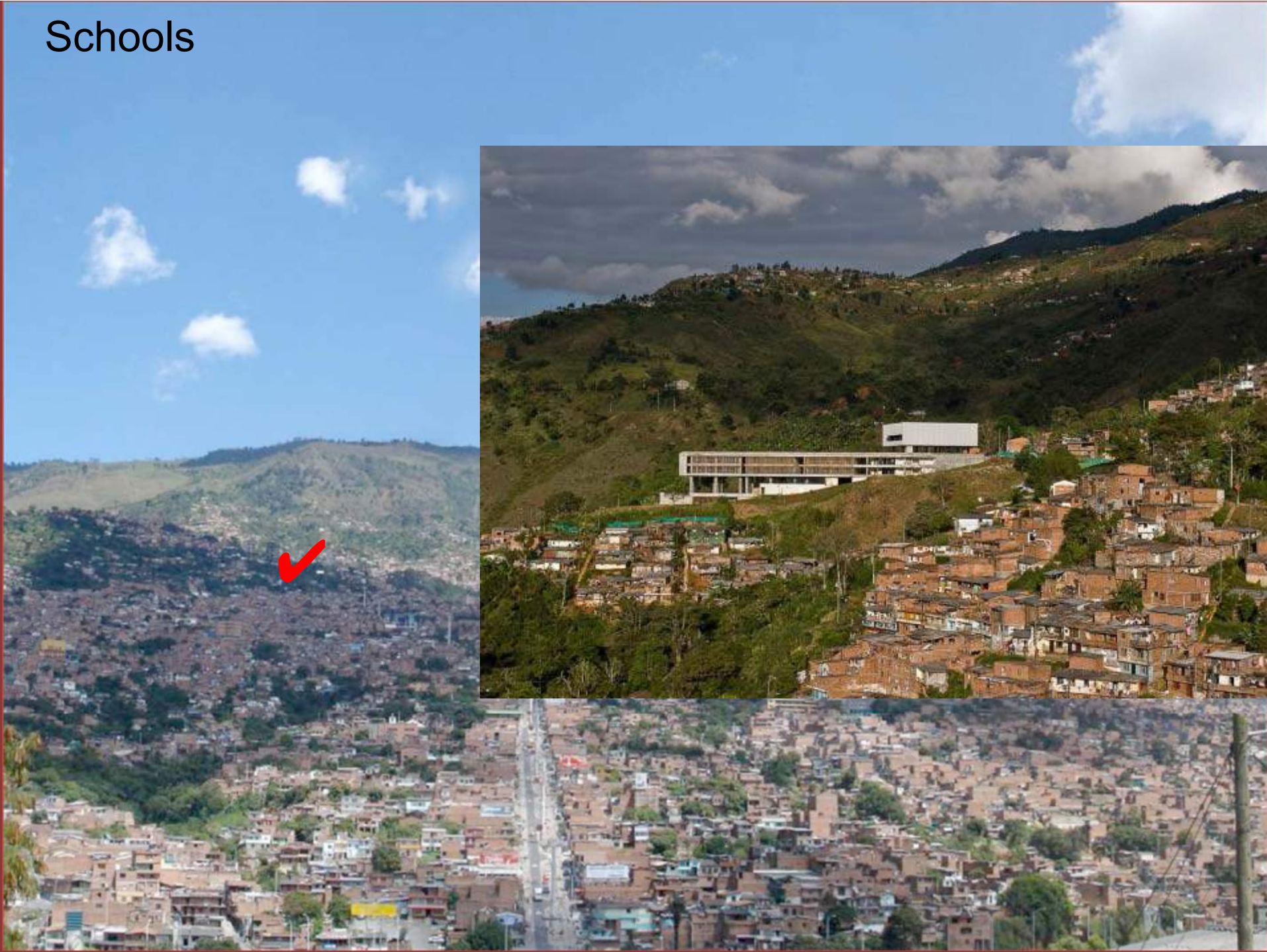




Parks & Boulevards



Schools

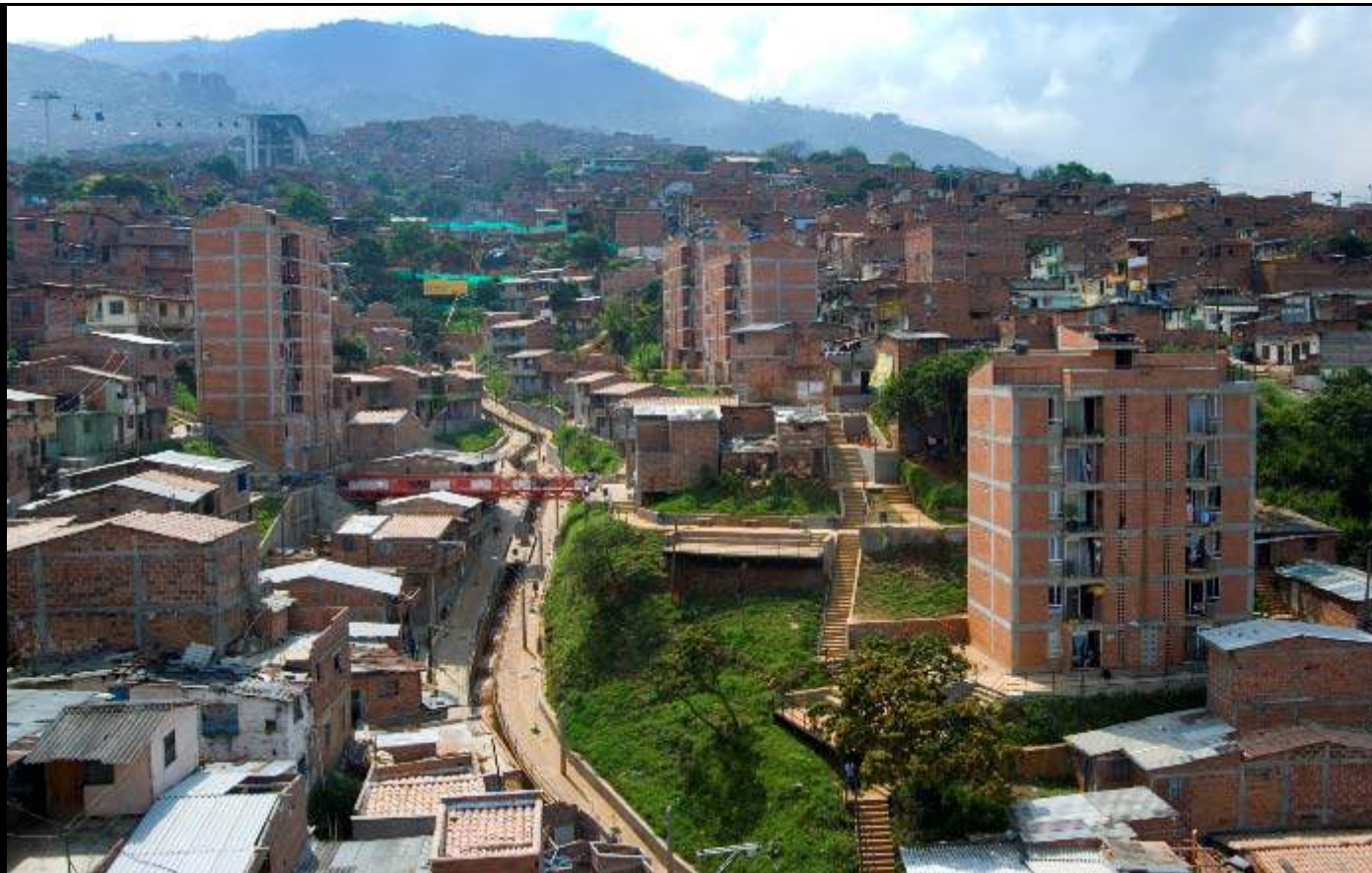


Bridges





Housing 2008



Before 2003



1

North Zone







DESIGN OF PROCESSES



Alcaldía de Medellín



Empresa de Desarrollo Urbano
Municipio de Medellín

2.010

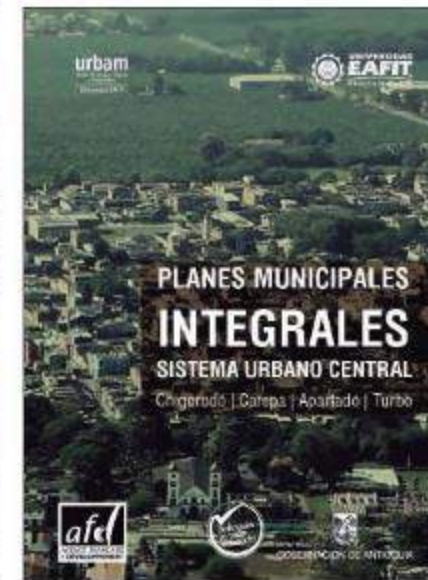
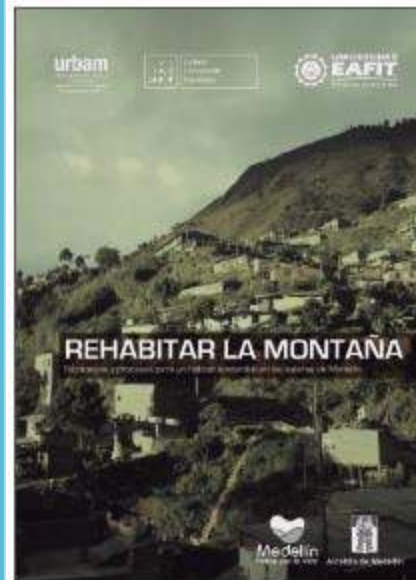
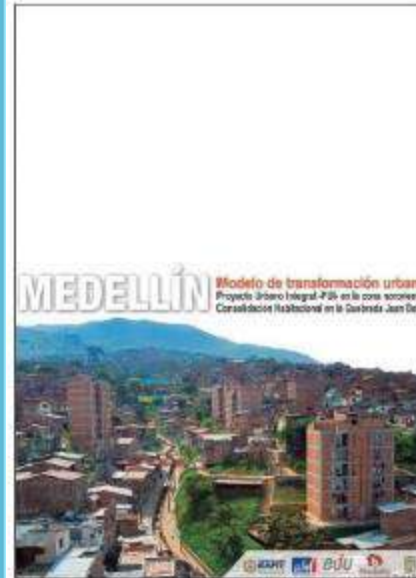


urbam

Centro de Estudios
Urbanos y Ambientales

www.eafit.edu.co/urbam

www.eafit.edu.co/urbam



Inspira Crea Transforma

What should be done about it?

Where should they go?

How can the City prevent growth in the most dangerous areas?



COMUNIDAD

- 1 Familia López
- 2 Familia Cook
- 3 Parpaleros
- 4 Eva Morín Ramírez
- 5 Roberto Zola
- 6 María Moreno Ramírez
- 7 Sociedad Gutiérrez y Ramírez
- 8 Antonio Suárez Zapata
- 9 Don Adriano
- 10 habitantes La Cruz
- 11 JAC La Cruz
- 12 habitantes La Honda
- 13 José Véliz Gómez
- 14 JAC La Honda
- 19 EPM
- 20 Metrocál
- 21 Empresa de transporte
- 22 EDU
- 23 SIMVED
- 24 INGER
- 25 Municipio
- 26 CAI

GRUPOS ARMADOS

- 15 Guarita
- 16 Grupo armado al margen de la ley
- 17 Paramilitares
- 18 Bandas Armadas
- 27 Fundación Berta Martínez
- 28 Fundación Socier
- 29 FAN
- 30 Semilla de Paz
- 31 Padre Manuel Burgos
- 32 Acción
- 33 Binapaz
- 34 Pasamanos
- 35 Fundación Palabra Pan y Paz
- 36 Fundación Gente Unida
- 37 Fundación Pro-Antioquias

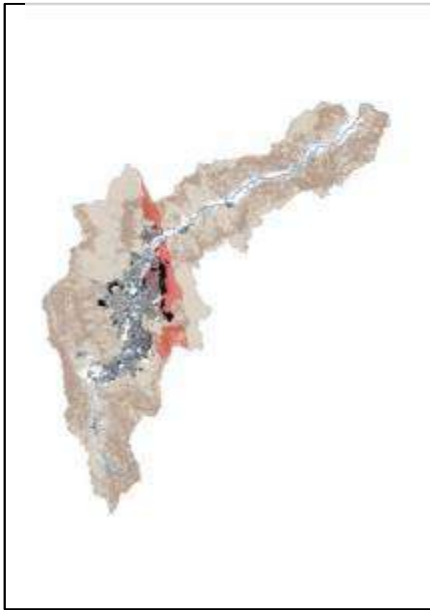
INSTITUCIONES



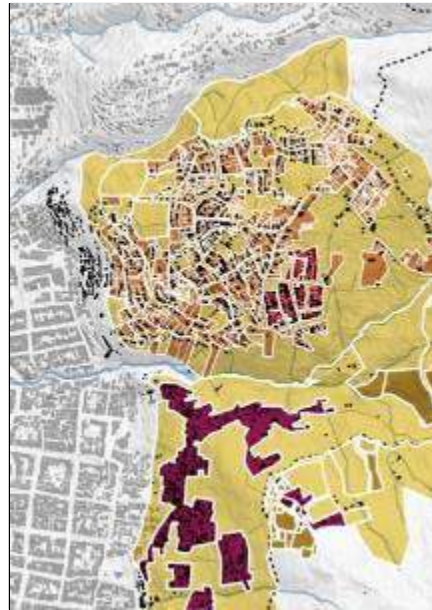
ASOCIACIONES, FUNDACIONES, ONG



Process



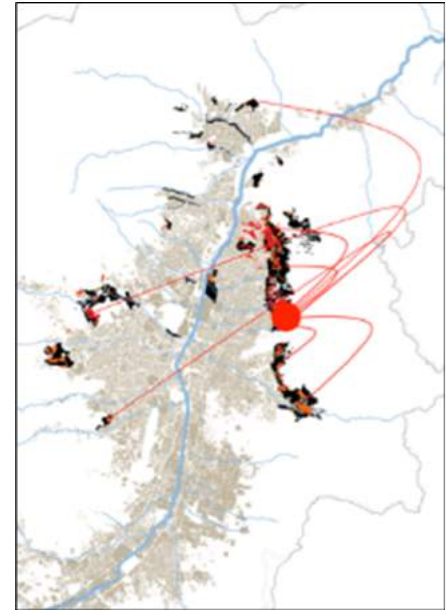
1. Regional Study



2. Site Study



3. Pilot Projects



4. Regional Proposal

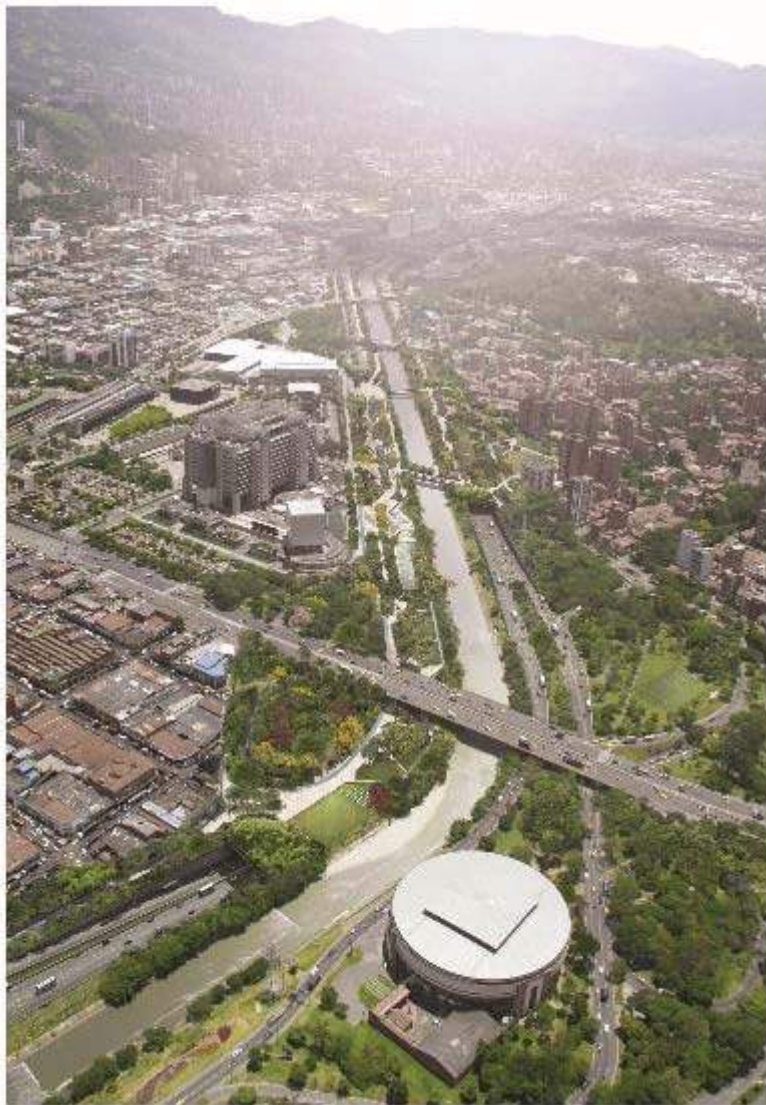
Community – Academy - International



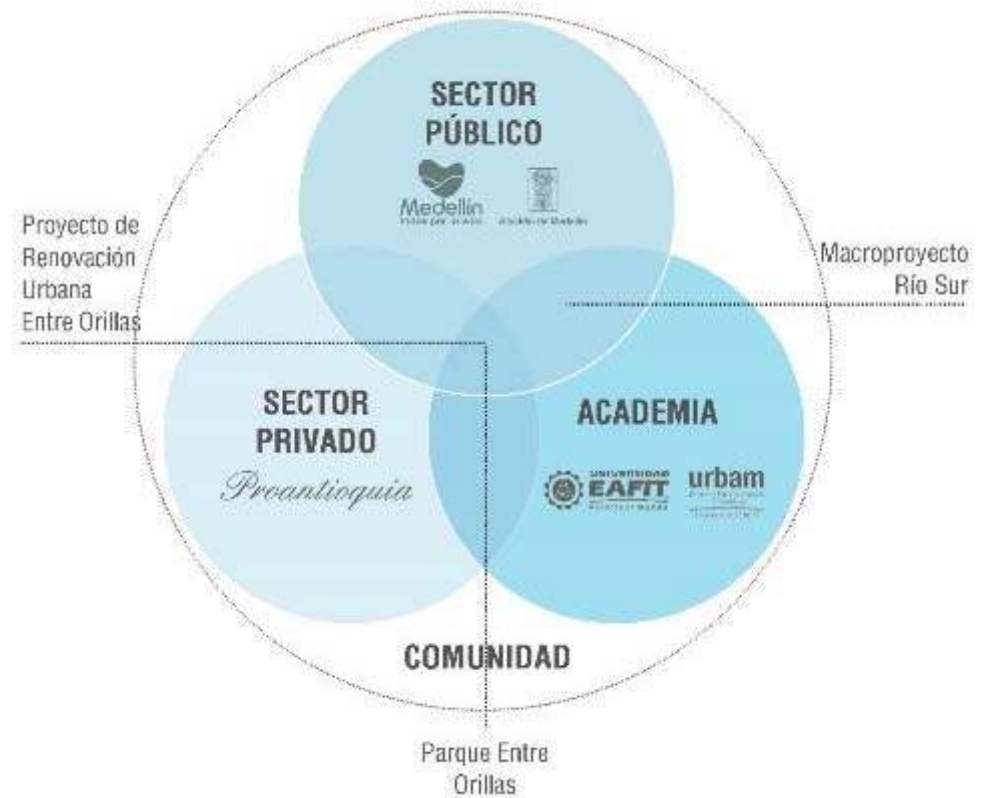
RE HABITAR LA LADERA
SHIFTING GROUND



Plan BIO 2030 And Urban Renewal River Park



Public – Private – Academy



Colombian regions

Local governments

Private

Academy



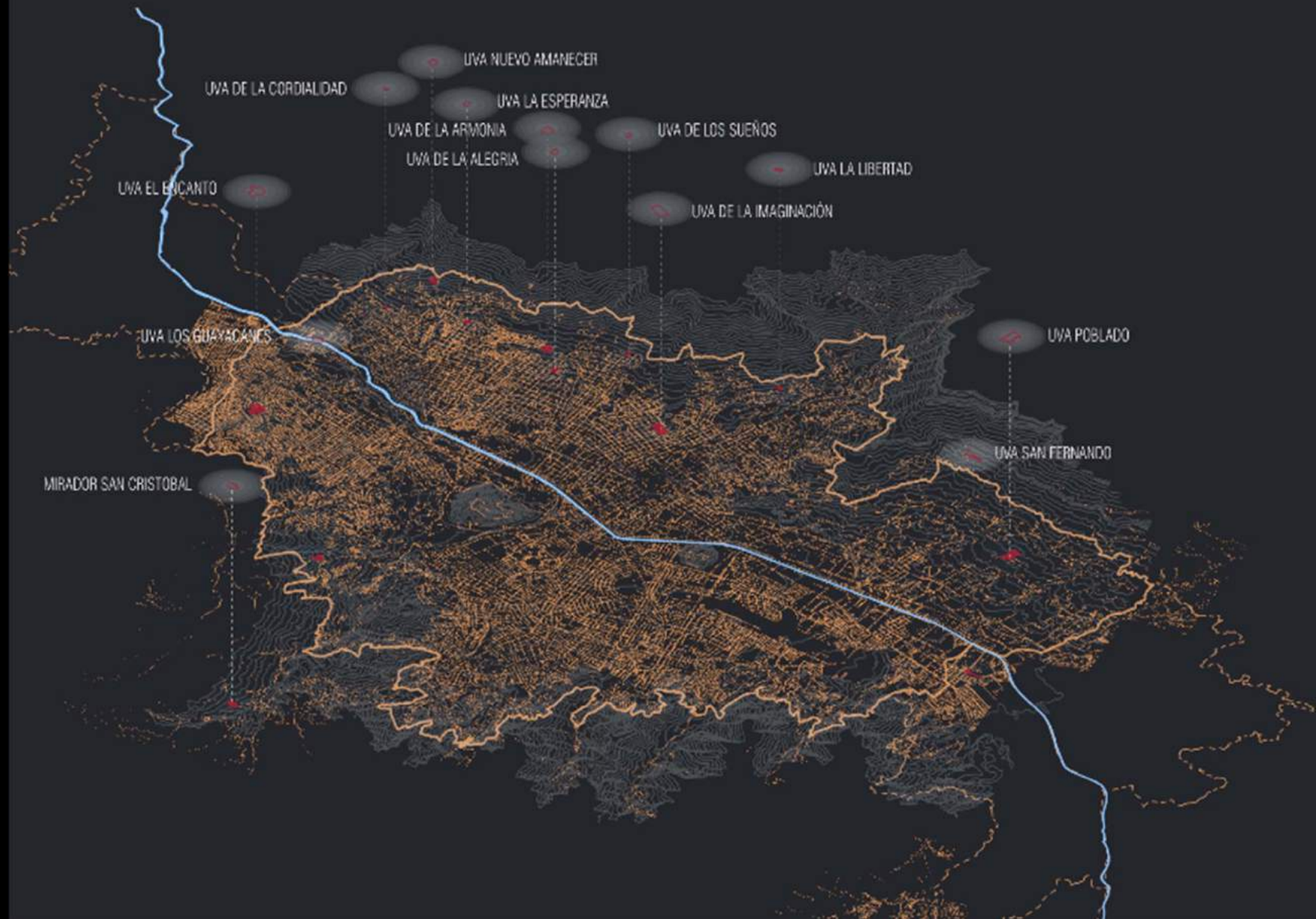


Medellin 2012 – 2015 Continuity of social innovation



UVAS

water reservoirs to cultural and community centers





2016



SUSTAINABLE
AND RISK-
PREPARED
MEDELLÍN



Create a sustainable and risk-prepared city through greater management of land and infrastructure, sustainable transportation, environmental planning and adequate management of the natural resources and quality of life for its citizens.

Medellin Narrative

inclusive city

Recognizing the entire city in order to expand its urban, cultural, and economic dynamics has been perhaps the most valuable aspect of the transformation.



Thanks



urbam | Centro de Estudios
Urbanos y Ambientales

www.eafit.edu.co/urbam