

Create forests, create the future

~ Shimokawa, Forest FutureCity that makes people shine ~

Shimokawa Town, Hokkaido

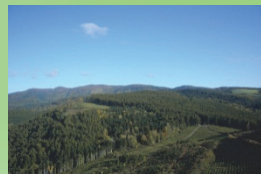
International Forum on the “FutureCity” Initiative

21st February, 2012

Shimokawa Town's construction of low carbon society in symbiosis with forestry

1. Summary

- ◇Population: 3, 644 (January end 2012)
- ◇Aging rate : 37. 2%
- ◇Area : 644. 2km² (East/West 20km, South/North 30km)
- ◇Forest area: 569. 8km² (88% of town area)
- ◇Comparative advantage: Forestry/forest products industry, utilization of woody biomass, low carbonization



2. Sustainable renewable forest management

~unlimited creation of resources~

- ◎Acquisition of National Forestry, establishment of joint forest management
- ◎Creation of stable economic foundation and employment through renewable forest management
- ◎Obtained "FSC Forest Certification" which is a global certification of appropriate forest management



3. Zero emission utilization of wood ~complete and efficient usage of resources~



Laminated lumber



Charcoal



Wood vinegar



Smoke wood



Wood products



Essential oil



4. Construction of low carbon society through utilization of woody biomass

~Selected as Environmental Model City~



Woody biomass boiler and local heating system



Production facility for woody materials



Planting willow that grows fast

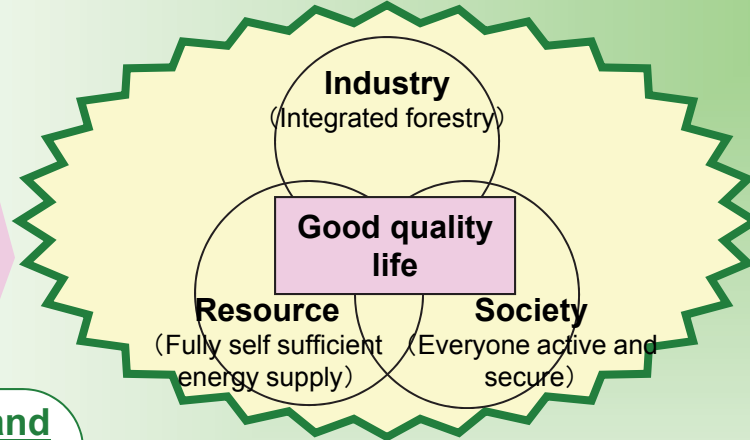


Eco house

Shimokawa will become the model “Forest FutureCity” by 2030

— Model of the “Forest FutureCity” —

A town surrounded by rich forest environment where people earn rich income from forests, learn, play and become healthy both mentally and physically in the forests and thereby live a spiritually rich life surrounded by trees.



Self sufficient energy supply and low carbonization

We will achieve complete self sufficiency of energy (heat/electricity) within the town by using small scale diversified renewable energy and eventually supply energy to neighboring municipalities.

By 2018, we will achieve
100% self sufficiency of energy (heat/electricity).

Integrated forest industry

We will reform the forestry system, cut costs and promote high value added products and will achieve profitability to be self sufficient through further utilization of wood.

By 2015, we will achieve
Annual production of Y3 billion in forestry and forest product industry

Super aging society model

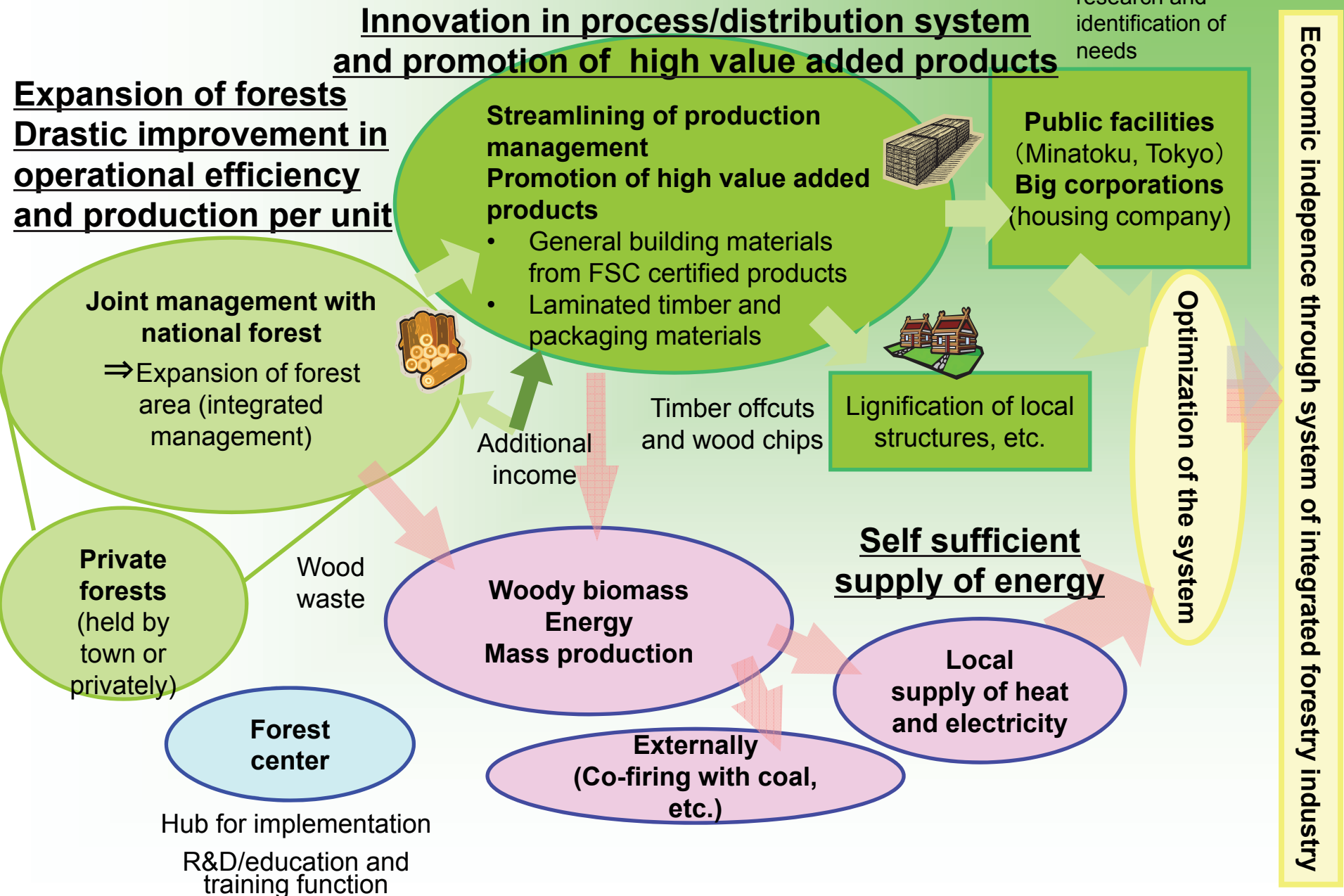
We will construct a model local community where residents become mentally and physically healthy from forests and continues to create comfortable living by way of mutual support.

By 2030, we will achieve
Annual medical benefit of Y600,000 (per head) by latter stage elderly

Self supported and autonomous foundation for growth

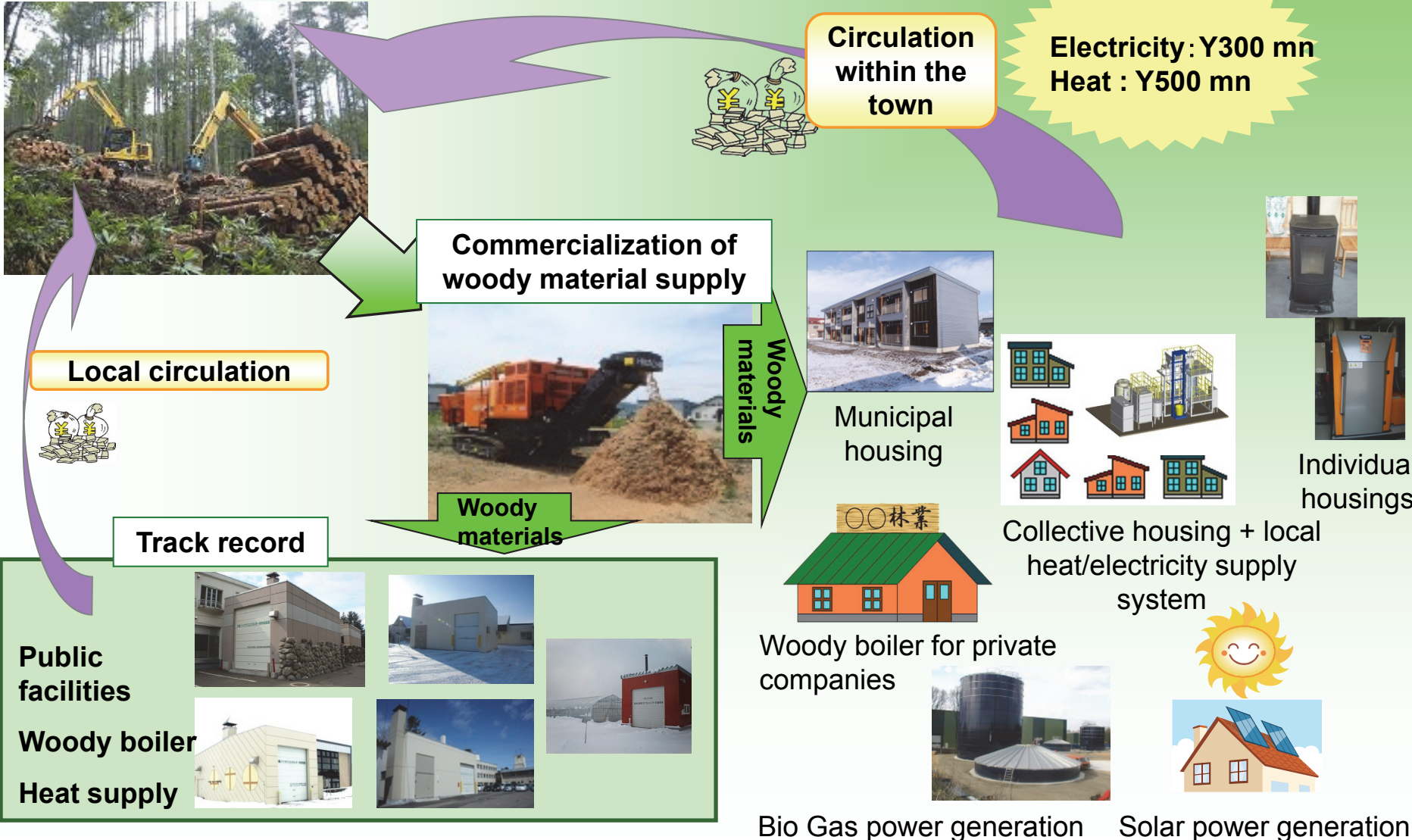
We will create our own R&D/incubation function, fundraising and investing methodology and self-check system.

Economic independence through system of integrated forestry industry



Creation of employment and risk management by self sufficient supply of energy

- Avoid risk of price fluctuations of fossil fuels and oil shock, reduce cost for residents, providing security for future crisis
- Circulation of energy cost within the town and creation of employment



Construction of self standing community through collective housing model

- Challenges from super aging society ...need for living support, weakening of sense of social solidarity
- Consolidation through collective housing...increase in communication and opportunities to co-work, facilitation of introducing self supply system of energy

Self supply of energy, self supply of food through mutual cooperation and co-work within the community and creation of new industries

Model for a self standing community that copes with both super aging and low carbonization



Collective housing

Social firm business



Small water power generation



Solar power generation



Supply of biomass energy



Community restaurant

Development of local brand products

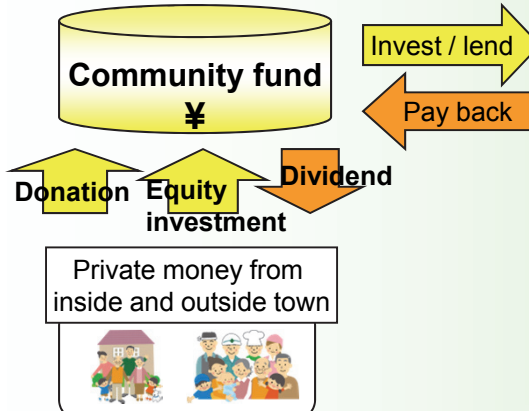
Establishing foundation for perpetual value creation

- What is lacking for local community to be self standing...funding, intelligence, governance
- Achieving independence and autonomy ...grow out of reliance on subsidy, creation of perpetual values

Establishing foundation for independence and autonomy through community fund, Shimokawa Future Creation Facility and Human Development Index

① Community fund

Secure independent funding in order to invest in projects to materialize "Forest FutureCity" model. Various methods considered including donations, publicly offered bonds, investment products, etc.

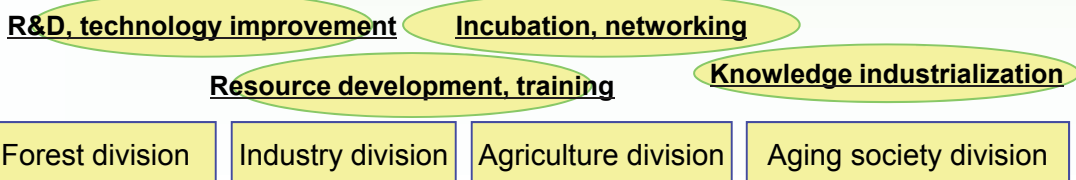


Projects to materialize Forest FutureCity

- Introduction of low carbonization equipment by private companies/individuals
- New business such as forestry business
- Creation of forest culture
- Community service for the elderly

② Shimokawa Future Creation Facility

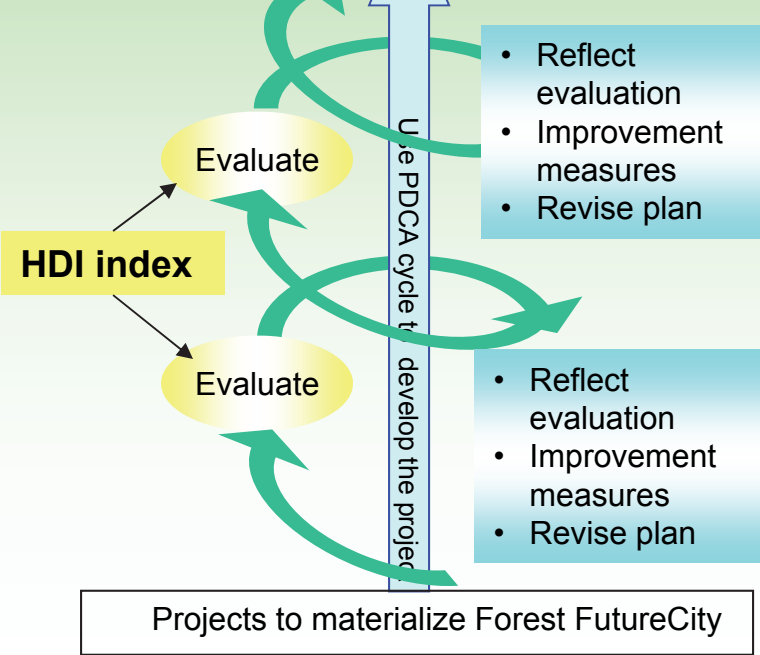
Establish a facility that will improve and develop system and equipment best fit for local resources, establish network externally, carry out education and training, incubation and knowledge industrialization.



③ HDI index of Shimokawa

Evaluate progress of becoming "a town where anyone would want to live", implement improvement measures periodically.

Utilize various evaluation indices relating to infrastructure, economy and low carbonization, etc. and take into consideration local characteristics.



Future of Japan in the forests....

