

Oct. 27, 2015

The 5th International Forum on “FutureCity” Initiative



Efforts and Inter-City Partnership of “FutureCity” Yokohama



Nobuya Suzuki
Deputy Mayor, City of Yokohama

© City of Yokohama 2015 All rights reserved.

History of Yokohama — Challenges it has overcome

1859: Yokohama opened a port

When the port opened: small village
After the port opened: entrance to Japan

1923: Great Kanto Earthquake

Yokohama suffered catastrophic damage but developed the framework of the current urban area through reconstruction

1945: Great Yokohama Air Raids

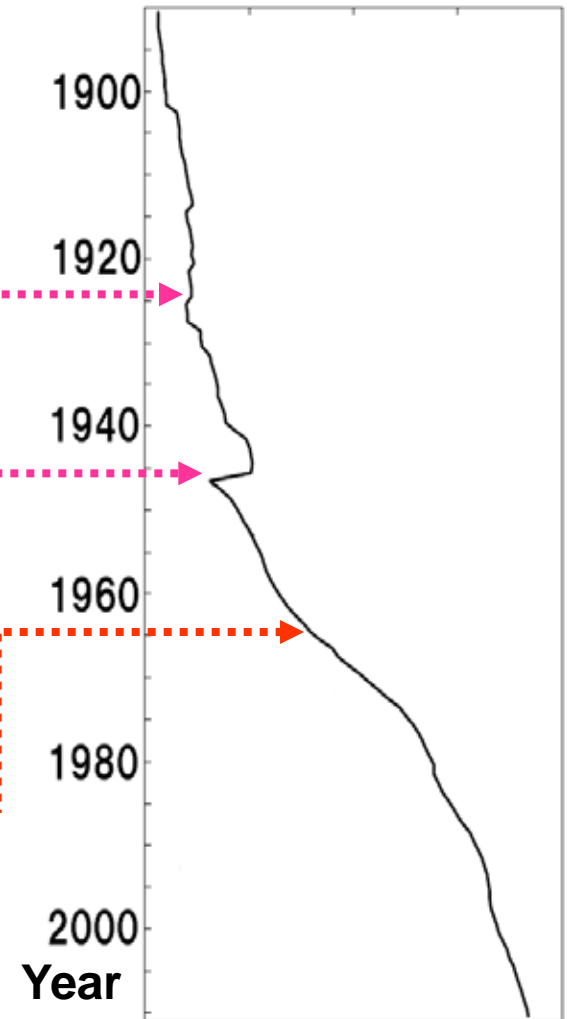
Key parts of the city requisitioned by the U.S. Forces

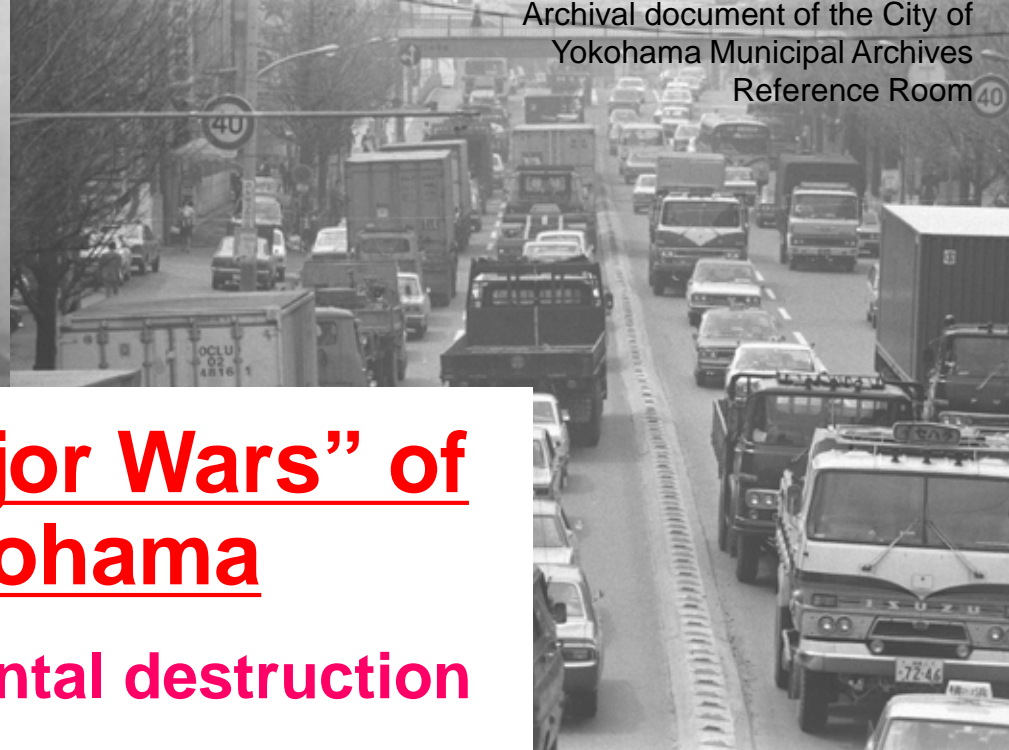
From 1965: High-growth period

Concentration of population

- Unregulated sprawling
- **Rapid deterioration of residential environment**

Population
(in tens of thousands)





“Five Major Wars” of Yokohama

- Environmental destruction
- Waste
- Road traffic
- Water resources
- Land for public use



From the website of the Road and
Highway Bureau of the City of Yokohama

© City of Yokohama 2015

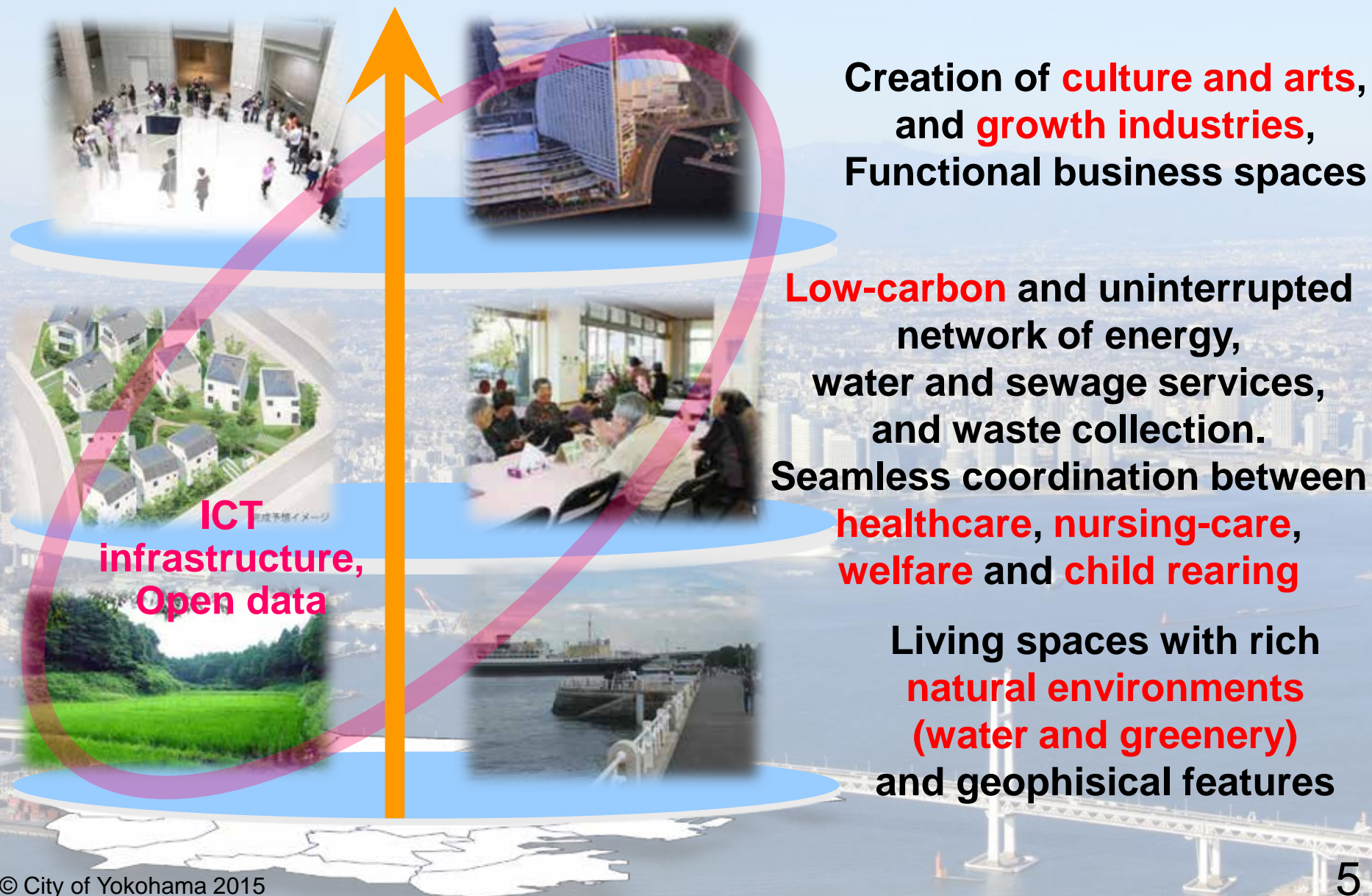


“Six Major Projects” of Yokohama

- Enhancement of the inner-city area
- Reclaiming of Kanazawa frontage
- Construction of the Kohoku New Town
- Construction of the subways
- Construction of the highways
- Construction of the Bay Bridge

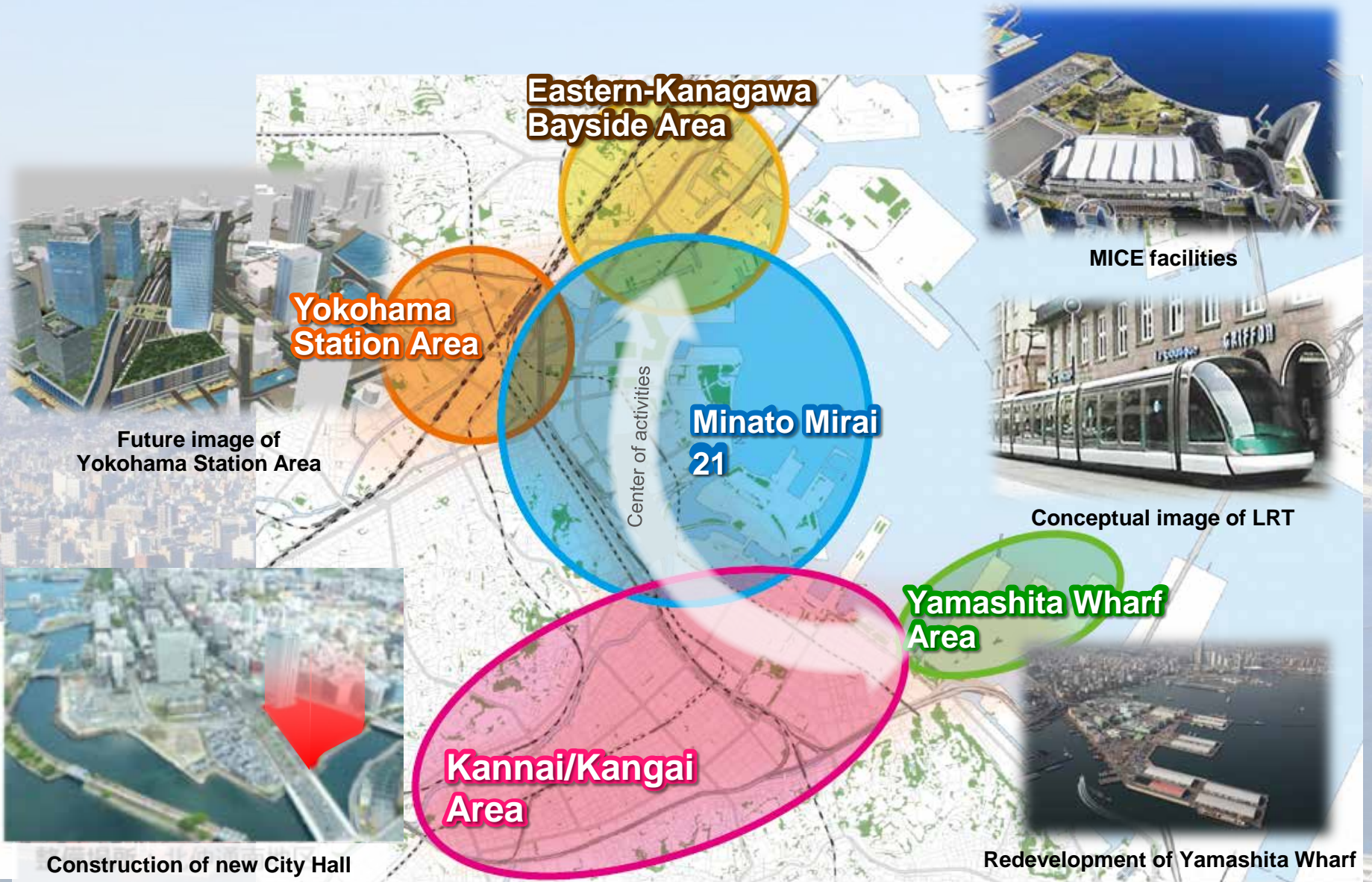


Vision of “FutureCity” Yokohama



“Urban Development” leveraging the characteristics of each area

Enhancement of the Appeals of the Inner-City Coastal Areas



Eastern-Kanagawa Bayside Area

Yokohama Station Area

Minato Mirai 21

Kannai/Kangai Area

Yamashita Wharf Area

Future image of Yokohama Station Area

MICE facilities

Center of activities

Conceptual image of LRT

Construction of new City Hall

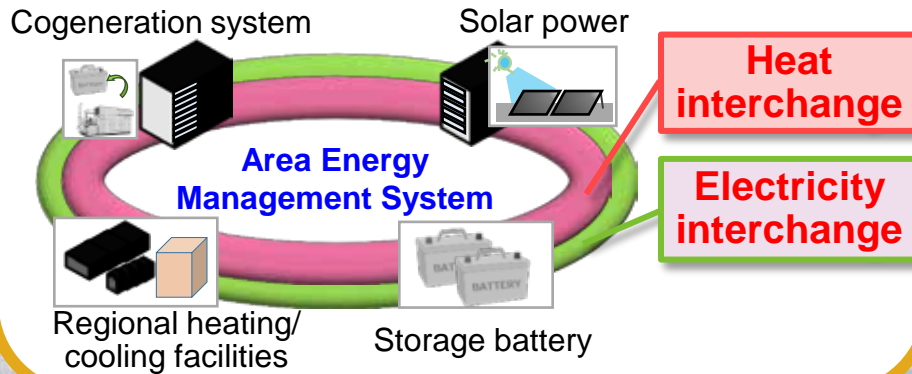
Redevelopment of Yamashita Wharf

Minatomirai 2050 Project

✕ The “Minatomirai 2050 Project Action Plan” was developed with the aim of making the Minatomirai 21 District the **“Smartest FutureCity that fascinates the world.”** (March 2015)

Energy

- Formation of autonomous distributed energy infrastructure that utilizes ICT



Green

- Parks and other green areas
- Public open spaces etc.



Wall greening



Green areas on streets

Activities

- MICE
- Creation of attractive points utilizing the port etc.



PACIFICO Yokohama



Smart illumination

Eco-Mobility

- Next-generation transportation
- New transportation system



One-way car sharing



LRT

- Sustainable Residential Neighborhood Model Projects

☒ Area to the north of Tama-Plaza Station

The City of Yokohama collaborated with **Tokyu Corporation** to develop the “Next-Generation Suburbs Town Development Basic Initiative 2013” in June 2013.

In the model areas, the “**Domestic Energy-Saving Project**,” “**Inhabitants Emergence Project**,” which is led by residents for realizing an energetic and rich community, and other projects were implemented.

☒ Area along Sotetsu Izumino Line

The City of Yokohama and **Sotetsu Holdings** signed a comprehensive agreement for urban development in April 2013.

By holding workshops for citizens and study groups, **the urban development vision and such like** were examined.

Tama-Plaza

Toka Ichiba

Area along Sotetsu Izumino Line

Yokodai

☒ Area around Toka Ichiba-cho

The city **publicly invited** and selected **applications by businesses that construct and maintain sustainable residential areas** for areas including city-owned land and large-scale housing complexes around the area.

☒ Area around Yokodai

Local bases (CC Lab) for multi-generational exchange and community revitalization were **launched as a trial** utilizing the available properties of the Chuo Danchi Residential Complex of **Urban Renaissance Agency**.

Domestic and Overseas Evaluation of the City of Yokohama

- ✧ Chosen as a **“FutureCity”** in 2011 and as an **“Eco-Model City”** in 2008 by Japanese government



- ✧ Chosen by OECD as a **case study city for the “Sustainable Urban Development Policies in Ageing Societies”** in 2014



- ✧ Participated in the **“Carbon Neutral Cities Alliance”** that is composed of member cities of the Large Cities Climate Leadership Group (C40) in 2015

✧ Award history

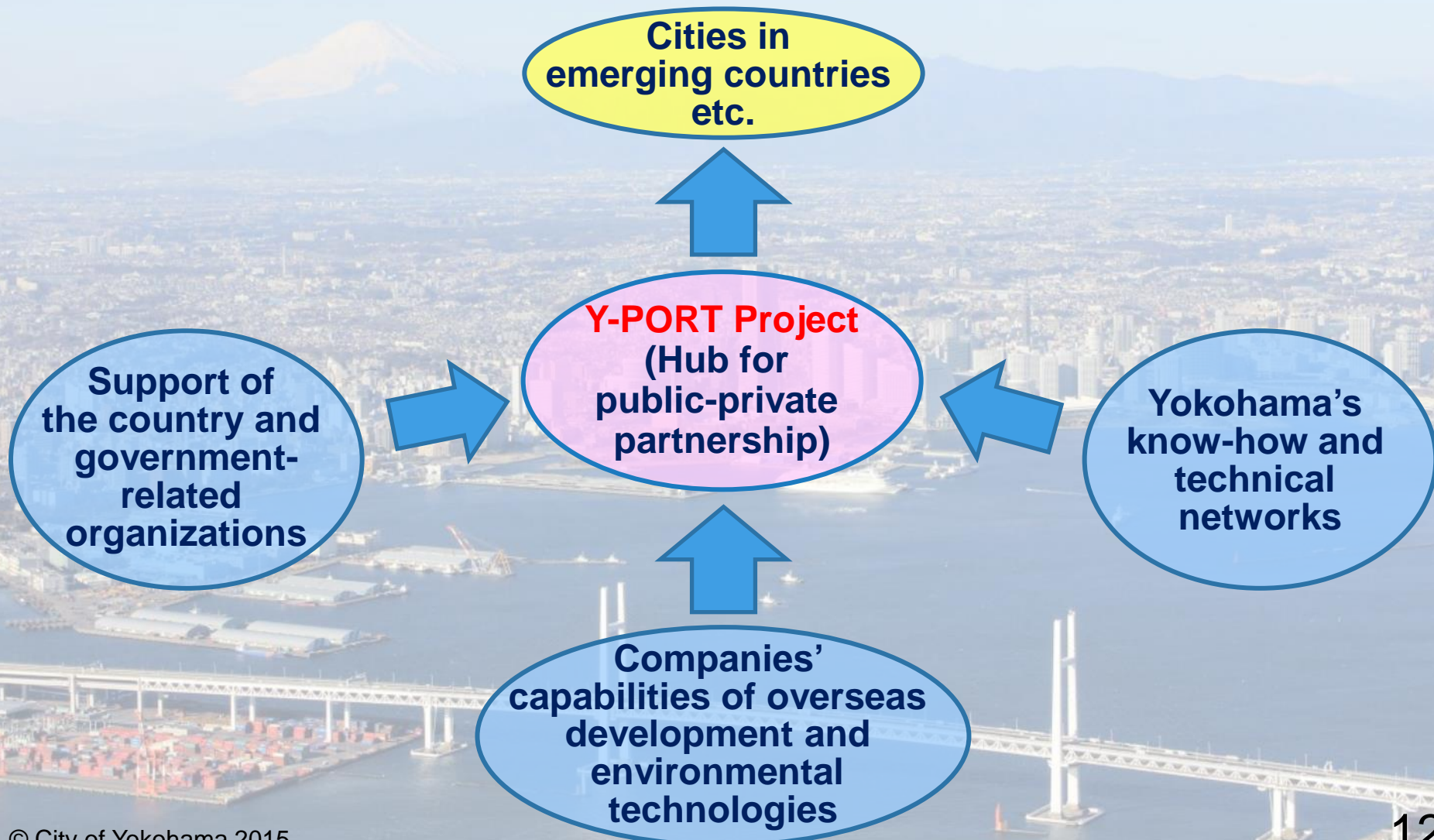
- **“World Smart Cities Awards” City** (Barcelona, Dec. 2011)
- **“Global Green City Award”** (Berlin, June 2013)
- **“Lee Kuan Yew World City Prize” Special Mention** (Singapore, June 2014) etc.

Inter-City Partnership and International Cooperation

International Technical Cooperation Through Public-Private Partnership (Y-PORT Project)



Support for sustainable **urban development** and for **business development** of Yokohama-based companies in emerging countries etc.



Examples of Inter-City Partnership Efforts

✧ Bangkok, Thailand

- Ø Support for development of the Bangkok Master Plan on Climate Change by JICA
- Ø Carried out low-carbon technology missions with Yokohama-based companies through a JCM investigation by the Ministry of the Environment to cultivate projects.



(Left and center) Support for development of Bangkok Master Plan on Climate Change (training in Japan, local workshop)
(Right) JCM low-carbon technology mission (Business matching for Yokohama-based companies)

✧ Cebu, Philippines

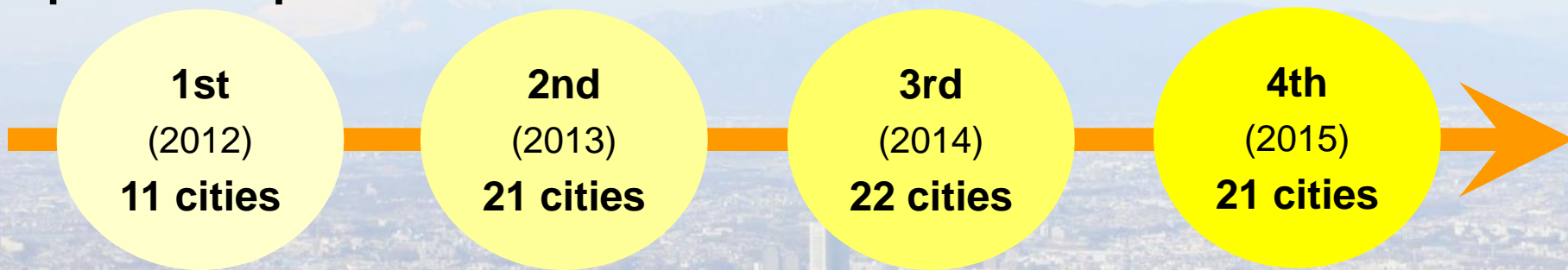
- Ø Supported the development of “MEGA Cebu Vision 2050,” an urban development vision by JICA and metro Cebu, from 2012.
- Ø Supported the development of “MEGA Cebu Roadmap 2050,” a long-term infrastructure plan for realizing the Vision.
- Ø Yokohama-based mid-sized and smaller companies have received orders for six JICA investigation and demonstration projects so far.



(Left) Sludge dewatering project of AMCON Inc.
(Right) Waste plastic recycling project of Mansei Recycle Systems Co.,Ltd.

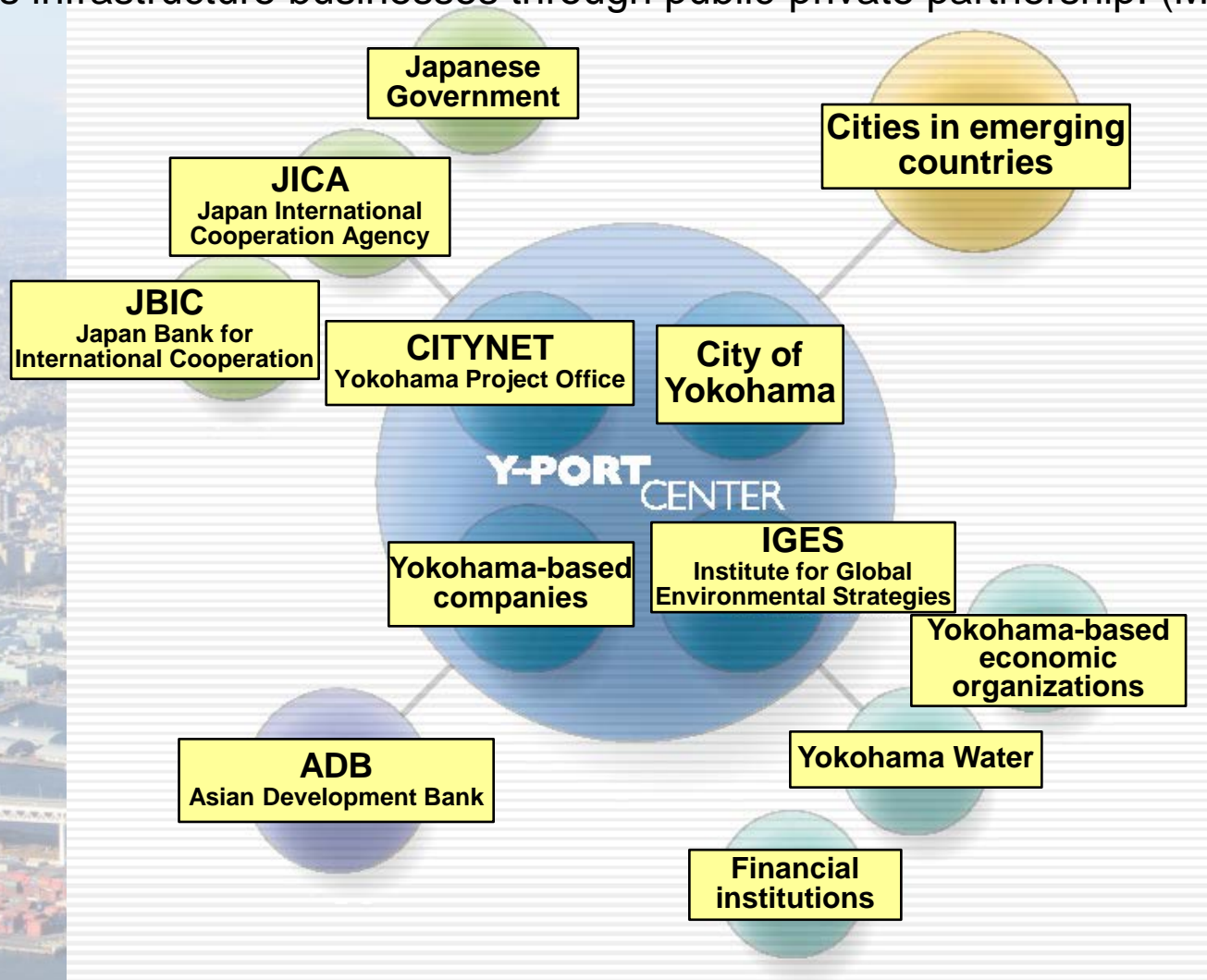
Asia Smart City Conference

A place to exchange opinions on issues and prospects of sustainable urban development in each city and enhance partnership between cities.



Establishment of Y-PORT Center

“Y-PORT Center” was established through collaboration of Yokohama-based companies, specialized agencies, and the City of Yokohama as a platform for promoting overseas infrastructure businesses through public-private partnership. (May 2015)





Thank you for your attention.



**Next Generation Suburban City Planning Project
(photos courtesy of City of Yokohama and Tokyu Corporation)**